

AENC-LSTC-ENG-DWG-0002

Norwich to Tilbury

Volume 2: Plans, Drawings and Sections

Document: 2.16 Trees and Hedgerows to be Removed and or
Managed Plans - Section D Tracked Changes Version of Deadline 4
Submission

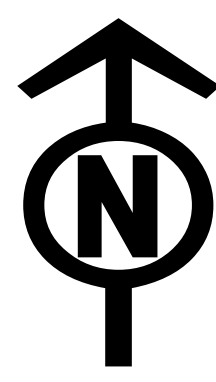
Final Issue B

June 2026

Planning Inspectorate Reference: EN020027

Infrastructure Planning (Applications: Prescribed Forms and Procedure)
Regulations 2009 Regulation 5(2)(o)

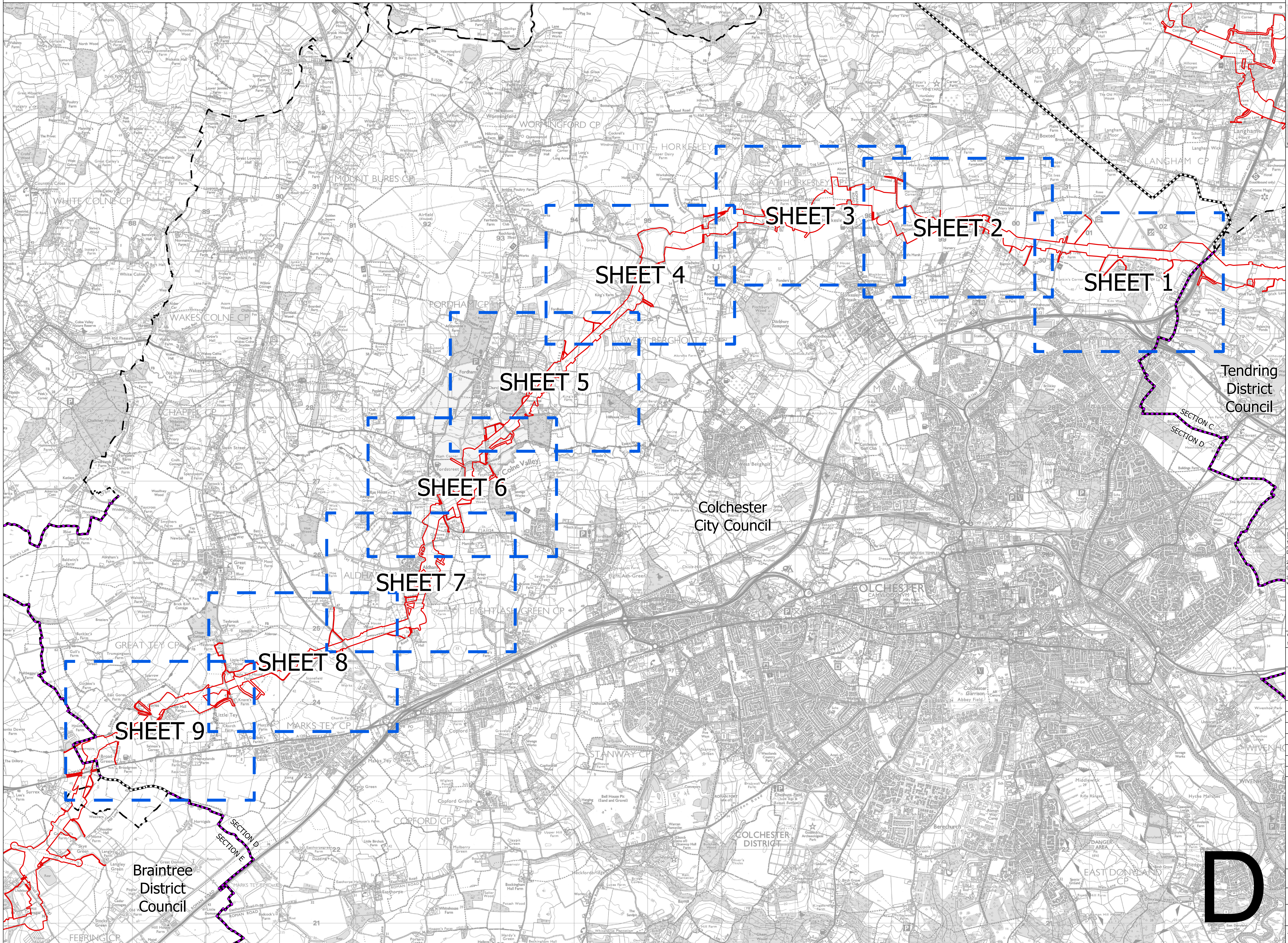
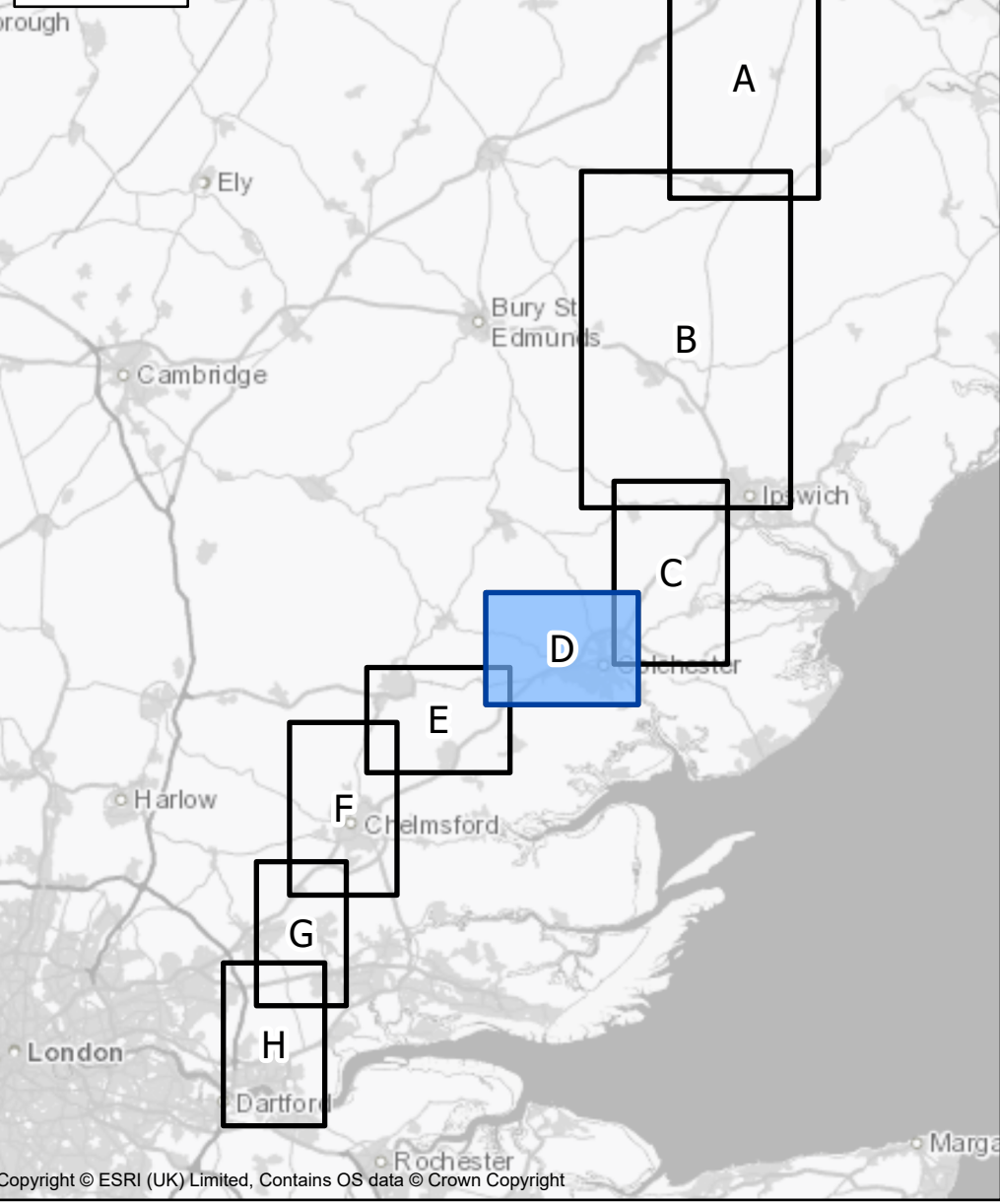
nationalgrid



THE NATIONAL GRID (NORWICH TO TILBURY) ORDER
 TREES AND HEDGEROWS TO BE REMOVED AND OR MANAGED PLANS KEY PLAN
 REGULATION 5(2)(o)
 SECTION D (SHEET 1 OF 1,
 BRAINTREE DISTRICT COUNCIL, COLCHESTER CITY COUNCIL AND TENDRING DISTRICT COUNCIL)

Application Document 2.16

SITE MAP



- Legend**
- Local authority boundary
 - Section boundary & local authority boundary
 - Section boundary
 - - - Sheet index
 - Order Limits

- Notes**
1. These plans are indicative and the Project will all within the Order Limits. Due to the need for future flexibility, National Grid will be applying for Order Limits and Limits of Deviation within its DCO, within which any final alignment would lie.
 2. For additional detail on the plan rules, please refer to the Guide to Plans (document reference 2.0), located in the Volume 2 of the DCO application.
 3. This drawing is scaled at paper size A0, therefore any prints taken at smaller sizes will affect accuracy of the measurement units and should not be scaled against.

Coordinate System: British National Grid
 Sheet X Centroid Coordinate: 594955 Sheet Y Centroid Coordinate: 227102

0 250 500 1,000 1,500 Metres

BACKGROUND MAPPING INFORMATION HAS BEEN REPRODUCED FROM THE ORDNANCE SURVEY BY PERMISSION OF ORDNANCE SURVEY OF THE CONTROLLER OF HIS MAJESTY'S STATIONERY OFFICE. © CROWN COPYRIGHT AND DATABASE RIGHTS (2025) LICENCE OS100024241 AND AC0000807948.

Issue	Date	Remarks	Drawn	Checked	Approved
B	MAY-2026	For deadline four	TMH	JPC	KR
A	AUG-2025	For DCO submission	EOS	JPC	KR

Title THE NATIONAL GRID (NORWICH TO TILBURY) ORDER TREES AND HEDGEROWS TO BE REMOVED AND OR MANAGED PLANS KEY PLAN REGULATION 5(2)(o) SECTION D (SHEET 1 OF 1, BRAINTREE DISTRICT COUNCIL, COLCHESTER CITY COUNCIL AND TENDRING DISTRICT COUNCIL)

nationalgrid
 PINS Application Number EN020027
 National Grid Drawing Reference AENC-LSTC-ENG-DWG-0002

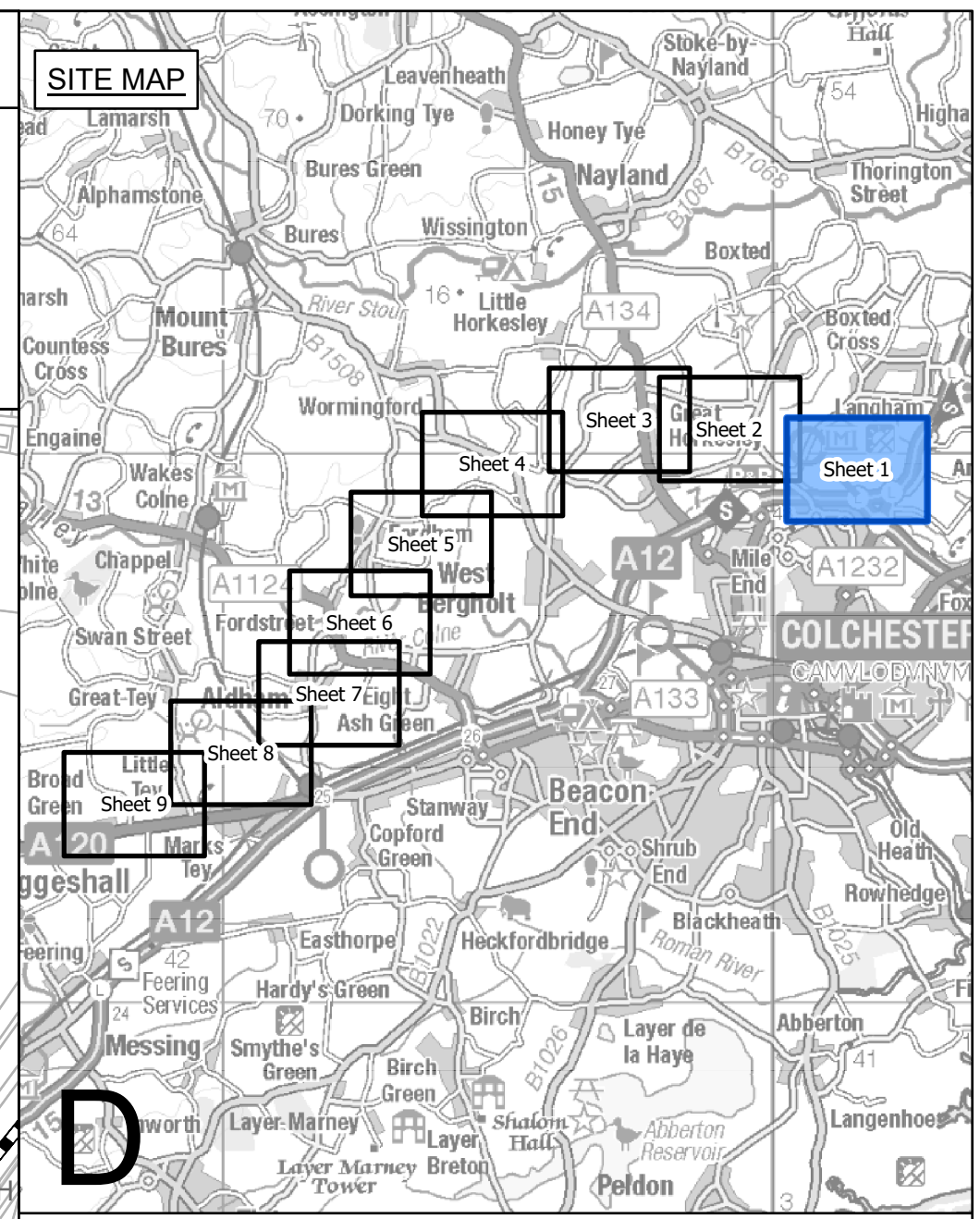
Scale	Sheet Size	Sheet	Issue
1:17,000	A0	SHEET 1 OF 1	B





THE NATIONAL GRID (NORWICH TO TILBURY) ORDER
 TREES AND HEDGEROWS TO BE REMOVED AND OR MANAGED PLANS
 REGULATION 5(2)(o)
 SECTION D (SHEET 1 OF 9,
 COLCHESTER CITY COUNCIL AND TENDRING DISTRICT COUNCIL)

Application Document 2.16

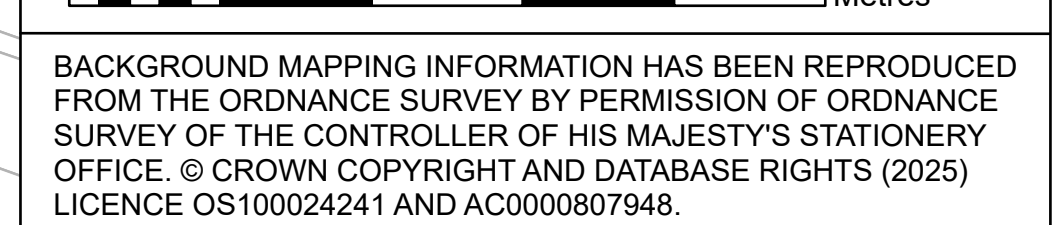


Legend

- Local authority boundary
- Section boundary & local authority boundary
- Section boundary
- Sheet index cutlines
- Order Limits
- Individual Tree Preservation Order
- Ancient woodland inventory (Natural England) as per DCO submission
- Project defined ancient woodland as per DCO submission
- Updated ancient woodland (Natural England) as per October 2025
- Veteran tree group
- Important hedgerows
- Veteran tree**
 - Removed
 - Affected managed
 - Potentially affected
 - Unaffected
- Tree**
 - Removed
 - Affected managed
 - Potentially affected
 - Unaffected
- Tree groups**
 - Removed
 - Affected managed
 - Potentially affected
 - Unaffected
- Hedgerows**
 - Removed
 - Affected managed
 - Potentially affected
 - Unaffected

- Notes**
- These plans are indicative and the Project will sit within the Order Limits. Due to the need for future flexibility, National Grid will be applying for Order Limits and Limits of Deviation within its DCO, within which any final alignment would lie.
 - For additional detail on the plan suites, please refer to the Guide to Plans (document reference 2.0), located in the Volume 2 of the DCO application.
 - This drawing is scaled at paper size A0, therefore any prints taken at smaller sizes will affect accuracy of the measurement units and should not be scaled against.
 - Spatial locations and details of Tree Preservation Orders have been provided by relevant local Planning Authorities and their projected spatial locations may differ slightly to those recorded during the arboricultural survey undertaken by the Project. For the avoidance of doubt, references to any tree subject to a Tree Preservation Order on these plans include any such slight differences.
 - The Tree Preservation Order data illustrated on the plans is limited to the arboriculture study area (which applies a 30 m buffer from the outer edge of the Order Limits).
 - Reference to any tree, shrub, shrubby, hedgerow, or important hedgerow being removed, affected managed, potentially affected or unaffected is without prejudice to the exercise of any power in relation to such tree, shrub, shrubby, hedgerow, or important hedgerow on the terms of the DCO.
 - The numbered references to trees comprised in any Individual Tree Preservation Order shown on these plans include any tree to which the relevant line points as well as any tree overlapping any such tree, whether or not a line points to it or not.
 - For the avoidance of doubt, where the section and/or local authority boundary and/or Order Limits shown on these plans overlap any tree, hedgerow or ancient woodland shown on these plans such that they are partially obscured these plans are to be interpreted as if the tree, hedgerow or ancient woodland in question is not so obscured.

Coordinate System: British National Grid
 Sheet X Centroid Coordinate: 601537 Sheet Y Centroid Coordinate: 229702

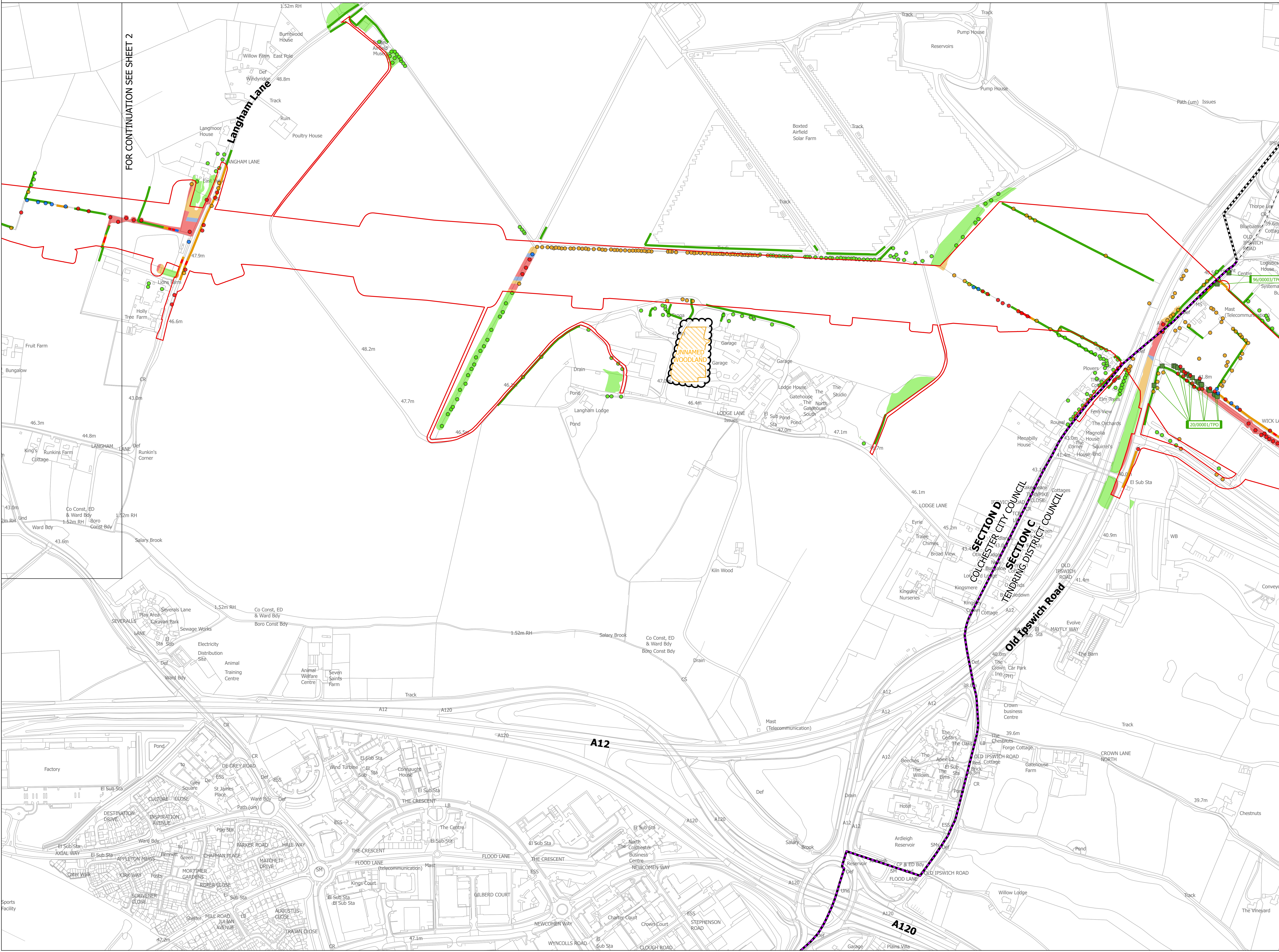


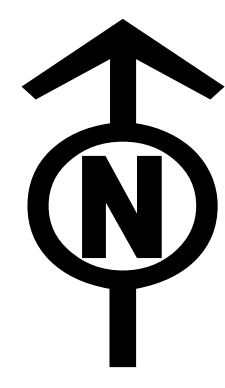
BACKGROUND MAPPING INFORMATION HAS BEEN REPRODUCED FROM THE ORDNANCE SURVEY BY PERMISSION OF ORDNANCE SURVEY OF THE CONTROLLER OF HIS MAJESTY'S STATIONERY OFFICE. © CROWN COPYRIGHT AND DATABASE RIGHTS (2025) LICENCE OS100024241 AND AC000087948.

Issue	Date	Remarks	Drawn	Checked	Approved
B	MAY-2026	For deadline four	TMH	JPC	KR
A	AUG-2025	For DCO submission	EOS	JPC	KR

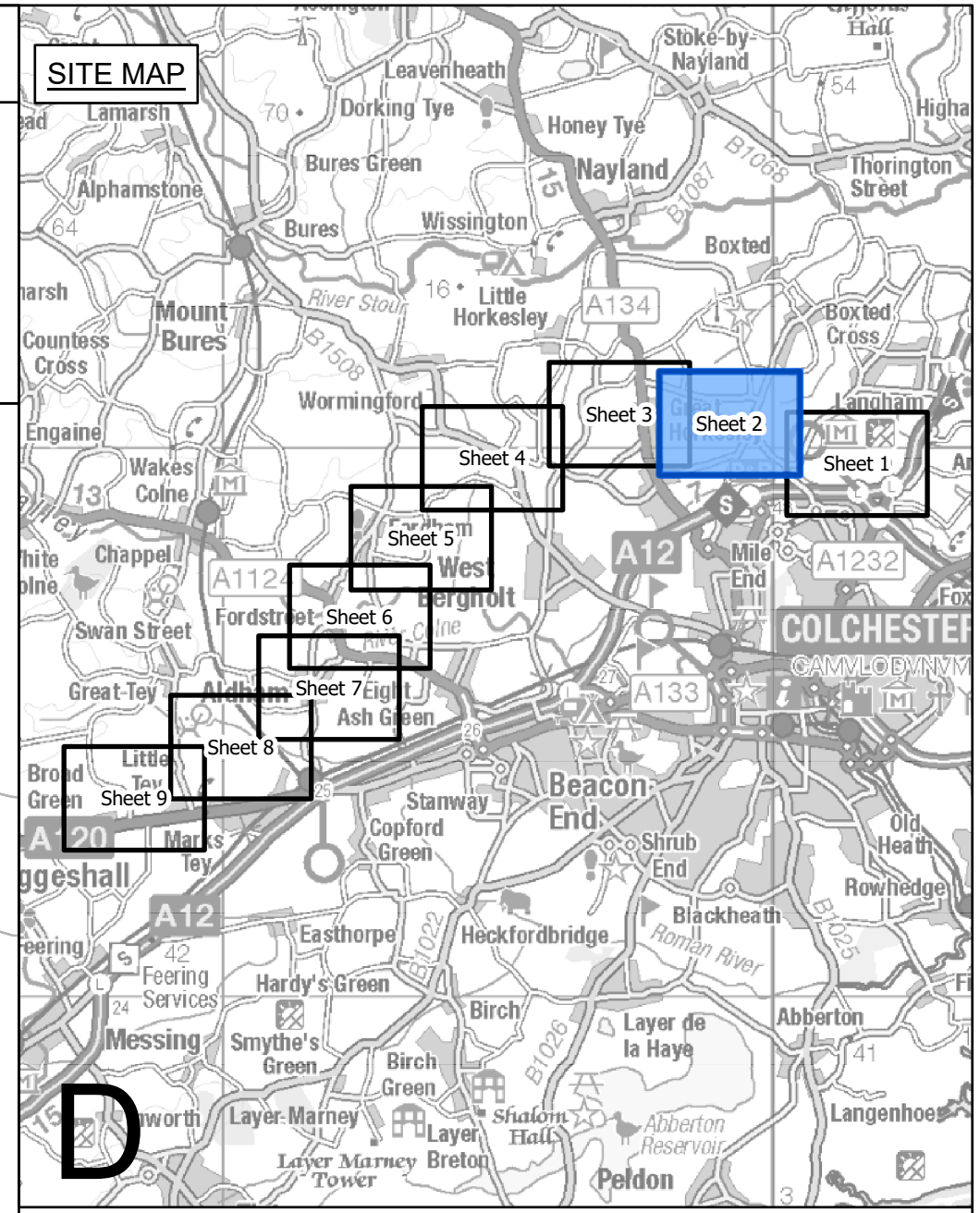
Title
 THE NATIONAL GRID (NORWICH TO TILBURY) ORDER
 TREES AND HEDGEROWS TO BE REMOVED
 AND OR MANAGED PLANS
 REGULATION 5(2)(o)
 SECTION D (SHEET 1 OF 9,
 COLCHESTER CITY COUNCIL AND
 TENDRING DISTRICT COUNCIL)

nationalgrid			
PINS Application Number		EN020027	
National Grid Drawing Reference			
AENC-LSTC-ENG-DWG-0002			
Scale	Sheet Size	Sheet	Issue
1:2,500	A0	SHEET 1 OF 9	B





THE NATIONAL GRID (NORWICH TO TILBURY) ORDER
TREES AND HEDGEROWS TO BE REMOVED AND OR MANAGED PLANS
REGULATION 5(2)(o)
SECTION D (SHEET 2 OF 9,
COLCHESTER CITY COUNCIL)



Legend

- Local authority boundary
- Section boundary & local authority boundary
- Section boundary
- Sheet index cutlines
- Order Limits
- Individual Tree Preservation Order
- Ancient woodland inventory (Natural England) as per DCO submission
- Project defined ancient woodland as per DCO submission
- Updated ancient woodland (Natural England) as per October 2025
- Veteran tree group
- Important hedgerows

Veteran tree

- Removed
- Affected managed
- Potentially affected
- Unaffected

Tree

- Removed
- Affected managed
- Potentially affected
- Unaffected

Tree groups

- Removed
- Affected managed
- Potentially affected
- Unaffected

Hedgerows

- Removed
- Affected managed
- Potentially affected
- Unaffected

Notes

- These plans are indicative and the Project will sit within the Order Limits. Due to the need for future flexibility, National Grid will be applying for Order Limits and Limits of Deviation within its DCO, within which any final alignment would lie.
- For additional detail on the plan suites, please refer to the Guide to Plans (document reference 2.0), located in the Volume 2 of the DCO application.
- This drawing is scaled at paper size A0, therefore any prints taken at smaller sizes will affect accuracy of the measurement units and should not be scaled against.
- Spatial locations and details of Tree Preservation Orders have been provided by relevant Local Planning Authorities and their projected spatial locations may differ slightly to those recorded during the arboriculture survey undertaken by the Project. For the avoidance of doubt, references to any tree subject to a Tree Preservation Order on these plans include any such slight differences.
- The Tree Preservation Order data illustrated on the plans is limited to the arboriculture study area (which applies a 30 m buffer from the outer edge of the Order Limits).
- Reference to any tree, shrub, shrubbery, hedgerow, or important hedgerow being removed, affected managed, potentially affected or unaffected is without prejudice to the exercise of any power in relation to such tree, shrub, shrubbery, hedgerow, or important hedgerow on the terms of the DCO.
- The numbered references to trees comprised in any Individual Tree Preservation Order shown on these plans include any tree to which the relevant line points as well as any tree overlapping any such tree, whether or not a line points to it or not.
- For the avoidance of doubt, where the section and/or local authority boundary and/or Order Limits shown on these plans overlap any tree, hedgerow or ancient woodland shown on these plans such that they are partially obscured these plans are to be interpreted as if the tree, hedgerow or ancient woodland in question is not so obscured.

Coordinate System: British National Grid
Sheet X Centroid Coordinate: 599216 Sheet Y Centroid Coordinate: 230441

BACKGROUND MAPPING INFORMATION HAS BEEN REPRODUCED FROM THE ORDNANCE SURVEY BY PERMISSION OF ORDNANCE SURVEY OF THE CONTROLLER OF HIS MAJESTY'S STATIONERY OFFICE. © CROWN COPYRIGHT AND DATABASE RIGHTS (2025) LICENCE OS100024241 AND AC0000807948.

Issue	Date	Remarks	Drawn	Checked	Approved
B	MAY-2026	For deadline four	TMH	JPC	KR
A	AUG-2025	For DCO submission	EOS	JPC	KR

Title

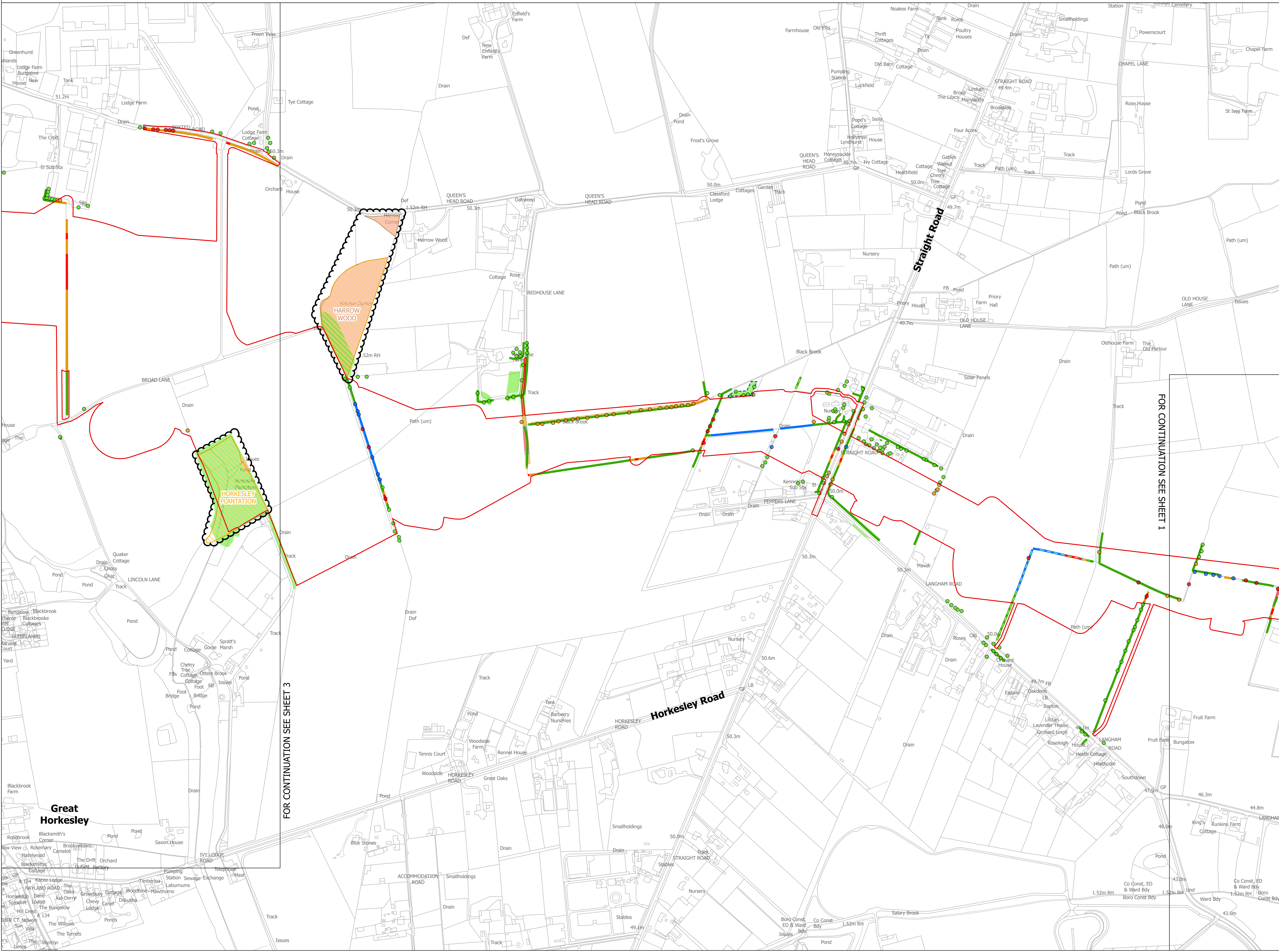
THE NATIONAL GRID (NORWICH TO TILBURY) ORDER
TREES AND HEDGEROWS TO BE REMOVED AND OR MANAGED PLANS
REGULATION 5(2)(o)
SECTION D (SHEET 2 OF 9,
COLCHESTER CITY COUNCIL)

nationalgrid

PIINS Application Number: EN020027

National Grid Drawing Reference: AENC-LSTC-ENG-DWG-0002

Scale	Sheet Size	Sheet	Issue
1:2,500	A0	SHEET 2 OF 9	B



FOR CONTINUATION SEE SHEET 3

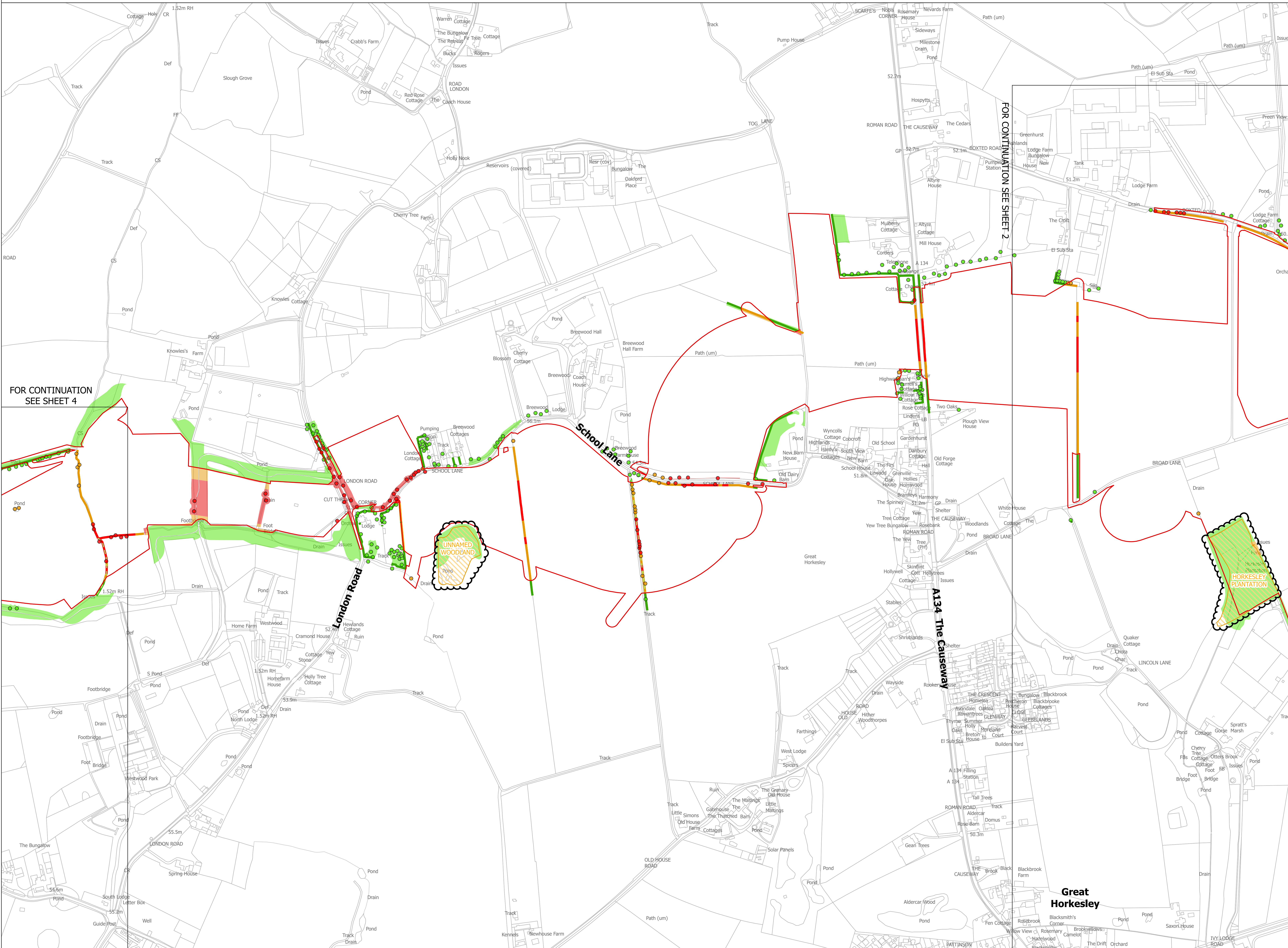
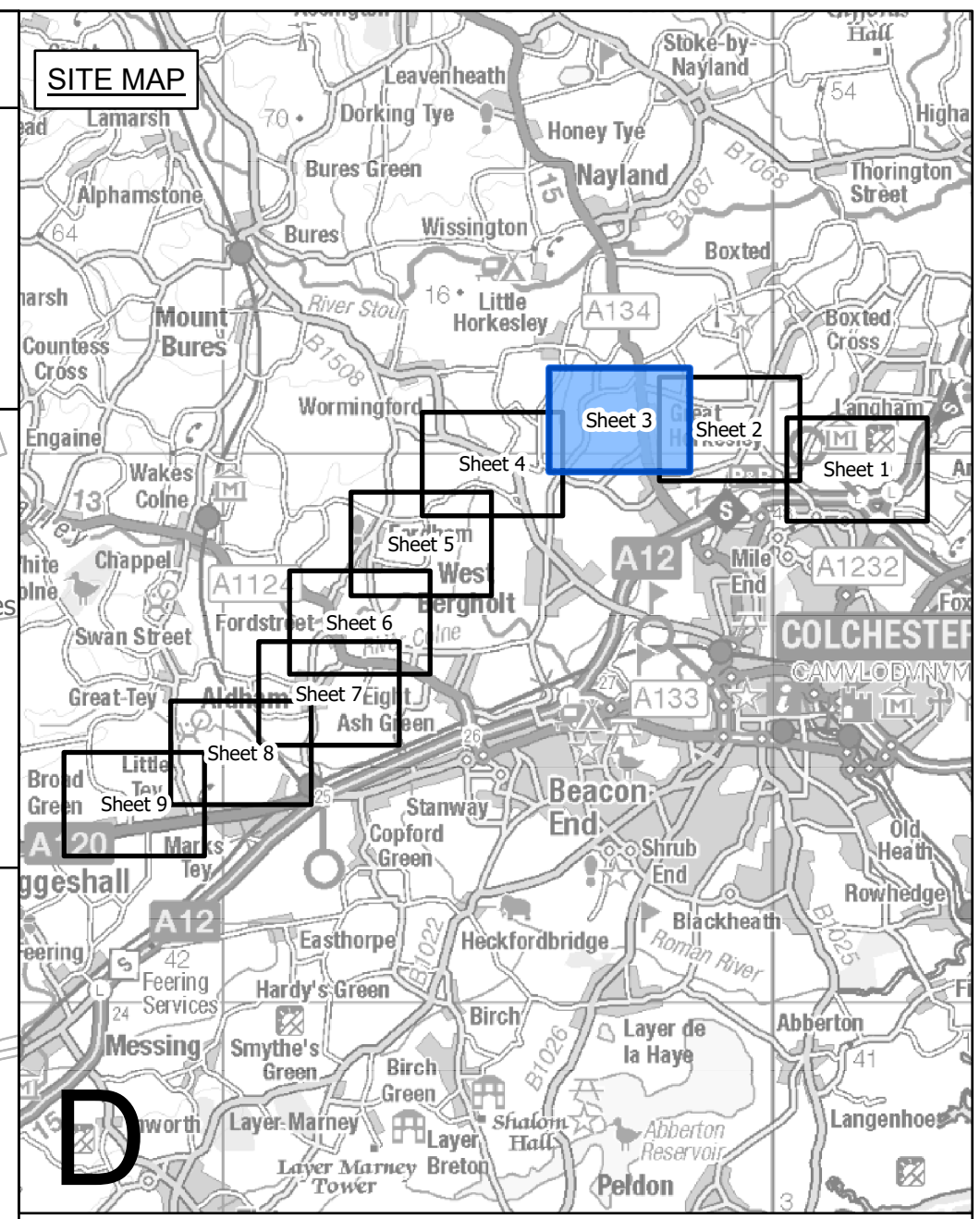
FOR CONTINUATION SEE SHEET 1

Great Horkesley



THE NATIONAL GRID (NORWICH TO TILBURY) ORDER
 TREES AND HEDGEROWS TO BE REMOVED AND OR MANAGED PLANS
 REGULATION 5(2)(o)
 SECTION D (SHEET 3 OF 9,
 COLCHESTER CITY COUNCIL)

Application Document 2.16



FOR CONTINUATION
SEE SHEET 4

FOR CONTINUATION
SEE SHEET 2

Legend

- Local authority boundary
- Section boundary & local authority boundary
- Section boundary
- Sheet index cutlines
- Order Limits
- Individual Tree Preservation Order
- Ancient woodland inventory (Natural England) as per DCO submission
- Project defined ancient woodland as per DCO submission
- Updated ancient woodland (Natural England) as per October 2025
- Veteran tree group
- Important hedgerows

Veteran tree

- Removed
- Affected managed
- Potentially affected
- Unaffected

Tree

- Removed
- Affected managed
- Potentially affected
- Unaffected

Tree groups

- Removed
- Affected managed
- Potentially affected
- Unaffected

Hedgerows

- Removed
- Affected managed
- Potentially affected
- Unaffected

Notes

- These plans are indicative and the Project will sit within the Order Limits. Due to the need for future flexibility, National Grid will be applying for Order Limits and Limits of Deviation within its DCO, within which any final alignment would lie.
- For additional detail on the plan suites, please refer to the Guide to Plans (document reference 2.0), located in the Volume 2 of the DCO application.
- This drawing is scaled at paper size A0, therefore any prints taken at smaller sizes will affect accuracy of the measurement units and should not be scaled against.
- Spatial locations and details of Tree Preservation Orders have been provided by relevant local Planning Authorities and their projected spatial locations may differ slightly to those recorded during the arboricultural survey undertaken by the Project. For the avoidance of doubt, references to any tree subject to a Tree Preservation Order on these plans include any such slight differences.
- The Tree Preservation Order data illustrated on the plans is limited to the arboriculture study area (which applies a 30 m buffer from the outer edge of the Order Limits).
- Reference to any tree, shrub, shrubbery, hedgerow, or important hedgerow being removed, affected managed, potentially affected or unaffected is without prejudice to the exercise of any power in relation to such tree, shrub, shrubbery, hedgerow, or important hedgerow on the terms of the DCO.
- The numbered references to trees comprised in any Individual Tree Preservation Order shown on these plans include any tree to which the relevant line points as well as any tree overlapping any such tree, whether or not a line points to it or not.
- For the avoidance of doubt, where the section and/or local authority boundary and/or Order Limits shown on these plans overlap any tree, hedgerow or ancient woodland shown on these plans such that they are partially obscured these plans are to be interpreted as if the tree, hedgerow or ancient woodland in question is not so obscured.

Coordinate System: British National Grid
 Sheet X Centroid Coordinate: 597209 Sheet Y Centroid Coordinate: 230604

BACKGROUND MAPPING INFORMATION HAS BEEN REPRODUCED FROM THE ORDNANCE SURVEY BY PERMISSION OF ORDNANCE SURVEY OF THE CONTROLLER OF HIS MAJESTY'S STATIONERY OFFICE. © CROWN COPYRIGHT AND DATABASE RIGHTS (2025) LICENCE OS100024241 AND AC0000807948.

Issue	Date	Remarks	Drawn	Checked	Approved
B	MAY-2026	For deadline four	TMH	JPC	KR
A	AUG-2025	For DCO submission	EOS	JPC	KR

Title

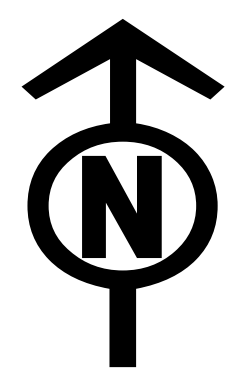
THE NATIONAL GRID
 (NORWICH TO TILBURY) ORDER
 TREES AND HEDGEROWS TO BE REMOVED
 AND OR MANAGED PLANS
 REGULATION 5(2)(o)
 SECTION D (SHEET 3 OF 9,
 COLCHESTER CITY COUNCIL)

nationalgrid

PIINS Application Number: EN020027

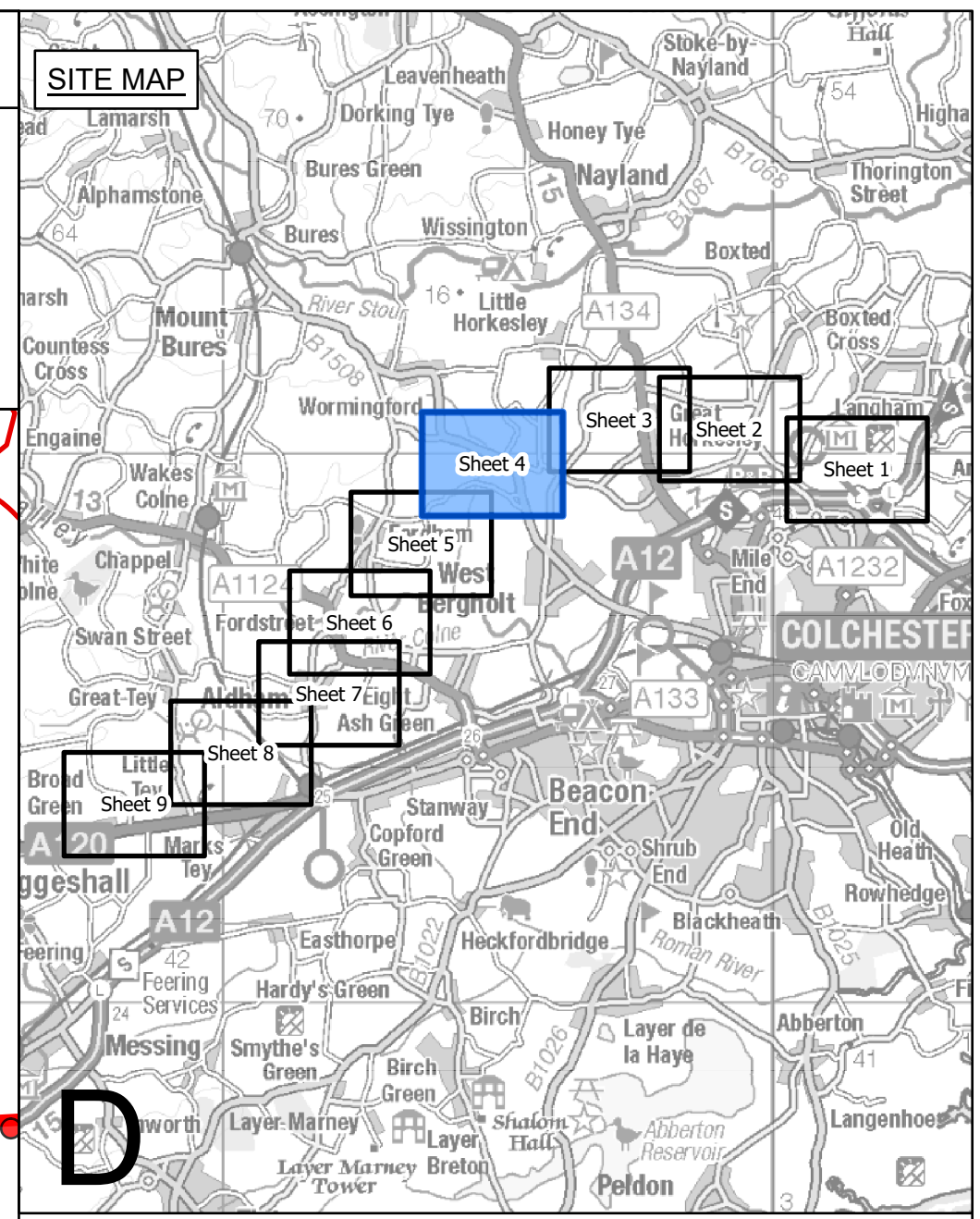
National Grid Drawing Reference: AENC-LSTC-ENG-DWG-0002

Scale	Sheet Size	Sheet	Issue
1:2,500	A0	SHEET 3 OF 9	B



THE NATIONAL GRID (NORWICH TO TILBURY) ORDER
 TREES AND HEDGEROWS TO BE REMOVED AND OR MANAGED PLANS
 REGULATION 5(2)(o)
 SECTION D (SHEET 4 OF 9,
 COLCHESTER CITY COUNCIL)

Application Document 2.16



Legend

- Local authority boundary
- Section boundary & local authority boundary
- Section boundary
- Sheet index cutlines
- Order Limits
- Individual Tree Preservation Order
- Ancient woodland inventory (Natural England) as per DCO submission
- Project defined ancient woodland as per DCO submission
- Updated ancient woodland (Natural England) as per October 2025
- Veteran tree group
- Important hedgerows

Veteran tree

- Removed
- Affected managed
- Potentially affected
- Unaffected

Tree

- Removed
- Affected managed
- Potentially affected
- Unaffected

Tree groups

- Removed
- Affected managed
- Potentially affected
- Unaffected

Hedgerows

- Removed
- Affected managed
- Potentially affected
- Unaffected

- Notes**
- These plans are indicative and the Project will sit within the Order Limits. Due to the need for future flexibility, National Grid will be applying for Order Limits and Limits of Deviation within its DCO, within which any final alignment would lie.
 - For additional detail on the plan suites, please refer to the Guide to Plans (document reference 2.0), located in the Volume 2 of the DCO application.
 - This drawing is scaled at paper size A0, therefore any prints taken at smaller sizes will affect accuracy of the measurement units and should not be scaled against.
 - Spatial locations and details of Tree Preservation Orders have been provided by relevant Local Planning Authorities and their projected spatial locations may differ slightly to those recorded during the arboricultural survey undertaken by the Project. For the avoidance of doubt, references to any tree subject to a Tree Preservation Order on these plans include any such slight differences.
 - The Tree Preservation Order data illustrated on the plans is limited to the arboriculture study area (which applies a 30 m buffer from the outer edge of the Order Limits).
 - Reference to any tree, shrub, shrubbery, hedgerow, or important hedgerow being removed, affected managed, potentially affected or unaffected is without prejudice to the exercise of any power in relation to such tree, shrub, shrubbery, hedgerow, or important hedgerow on the terms of the DCO.
 - The numbered references to trees comprised in any Individual Tree Preservation Order shown on these plans include any tree to which the relevant line points as well as any tree overlapping any such tree, whether or not a line points to it or not.
 - For the avoidance of doubt, where the section and/or local authority boundary and/or Order Limits shown on these plans overlap any tree, hedgerow or ancient woodland shown on these plans such that they are partially obscured these plans are to be interpreted as if the tree, hedgerow or ancient woodland in question is not so obscured.

Coordinate System: British National Grid
 Sheet X Centroid Coordinate: 594899 Sheet Y Centroid Coordinate: 229802

0 50 100 150 200 250 Metres

BACKGROUND MAPPING INFORMATION HAS BEEN REPRODUCED FROM THE ORDNANCE SURVEY BY PERMISSION OF ORDNANCE SURVEY OF THE CONTROLLER OF HIS MAJESTY'S STATIONERY OFFICE. © CROWN COPYRIGHT AND DATABASE RIGHTS (2025) LICENCE OS100024241 AND AC0000807948.

Issue	Date	Remarks	Drawn	Checked	Approved
B	MAY-2026	For deadline four	TMH	JPC	KR
A	AUG-2025	For DCO submission	EOS	JPC	KR

Title

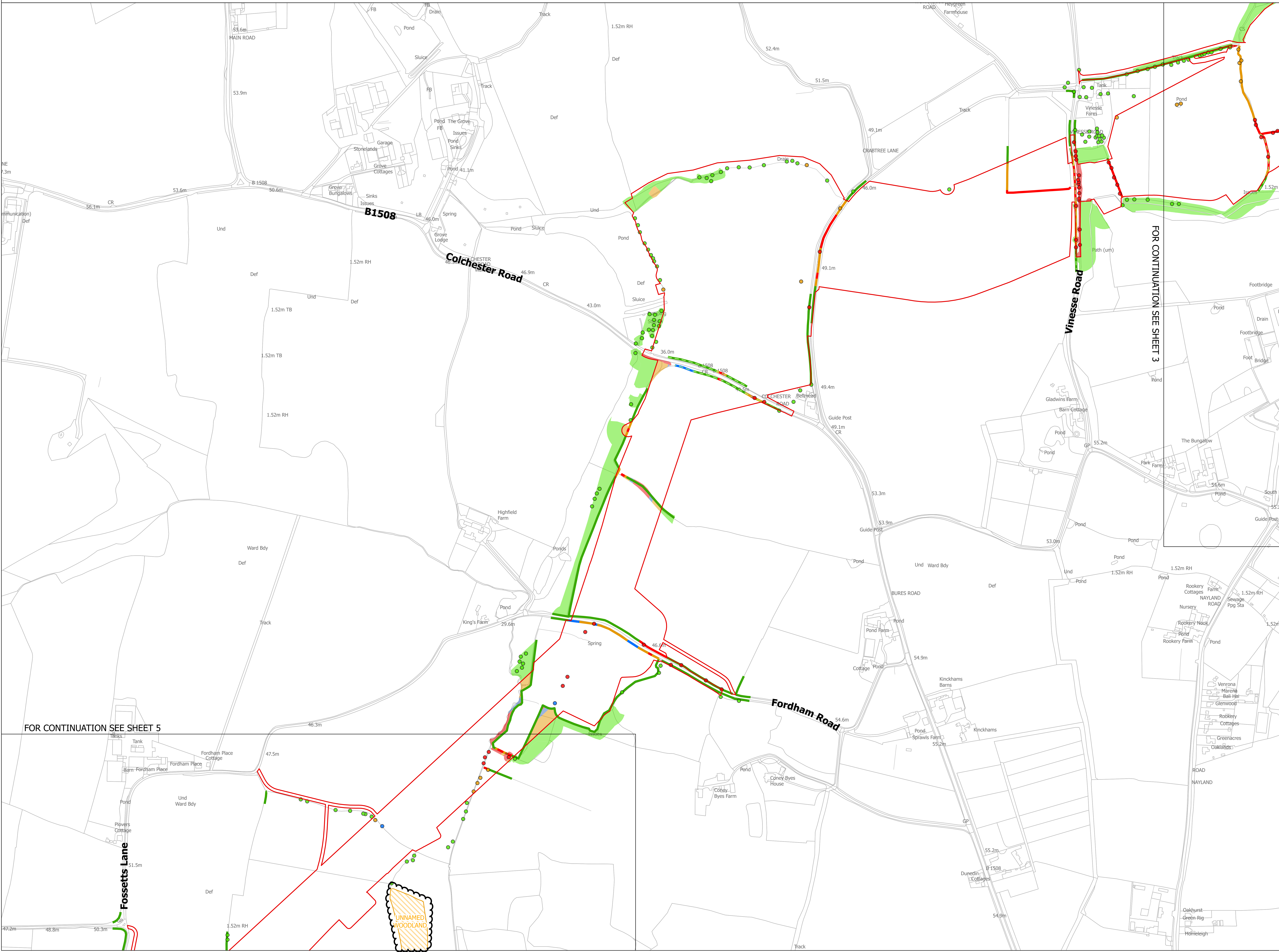
THE NATIONAL GRID (NORWICH TO TILBURY) ORDER
 TREES AND HEDGEROWS TO BE REMOVED AND OR MANAGED PLANS
 REGULATION 5(2)(o)
 SECTION D (SHEET 4 OF 9,
 COLCHESTER CITY COUNCIL)

nationalgrid

PINS Application Number EN020027

National Grid Drawing Reference
 AENC-LSTC-ENG-DWG-0002

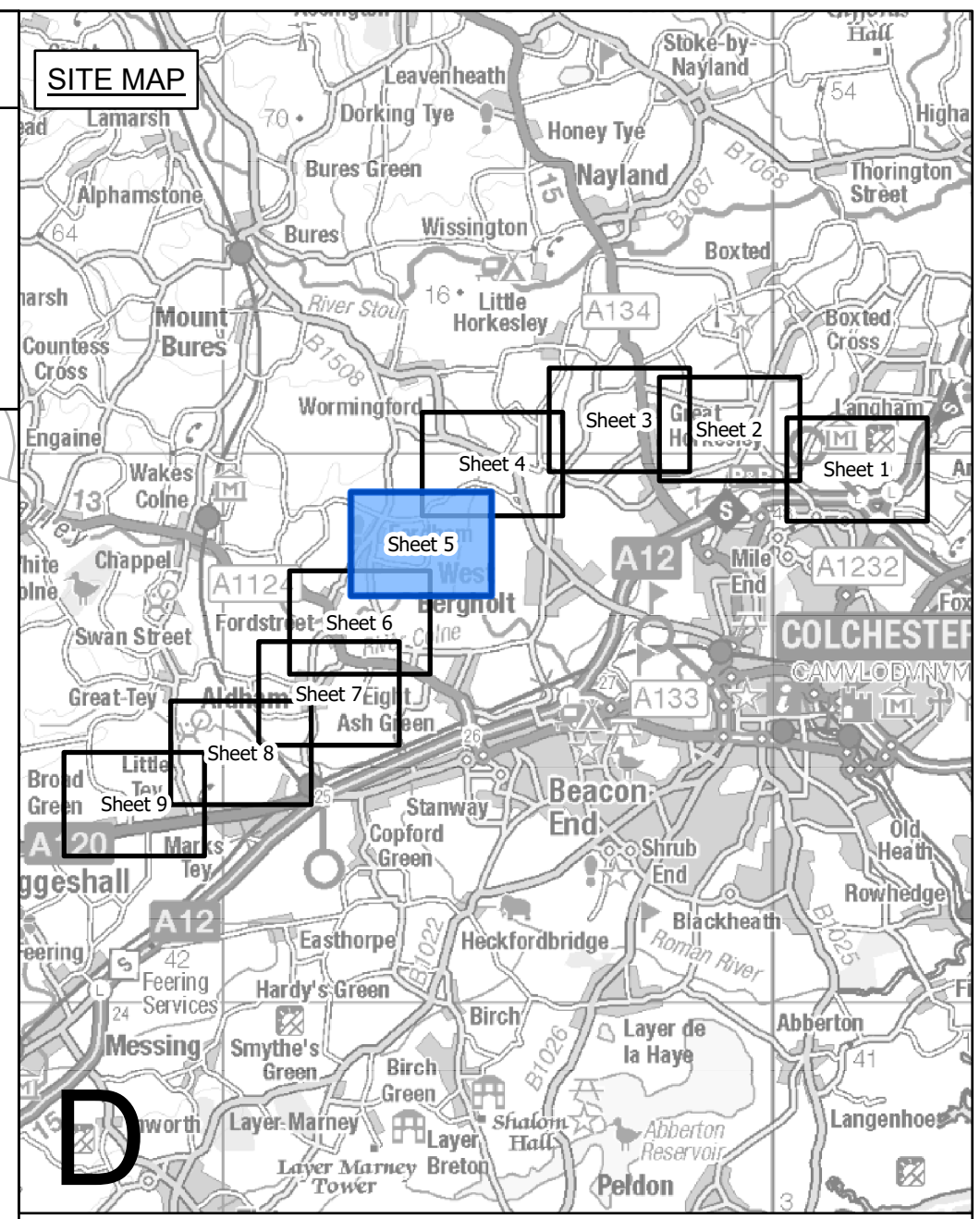
Scale	Sheet Size	Sheet	Issue
1:2,500	A0	SHEET 4 OF 9	B





THE NATIONAL GRID (NORWICH TO TILBURY) ORDER
 TREES AND HEDGEROWS TO BE REMOVED AND OR MANAGED PLANS
 REGULATION 5(2)(o)
 SECTION D (SHEET 5 OF 9,
 COLCHESTER CITY COUNCIL)

Application Document 2.16



Legend

- Local authority boundary
- Section boundary & local authority boundary
- Section boundary
- Sheet index cutlines
- Order Limits
- Individual Tree Preservation Order
- Ancient woodland inventory (Natural England) as per DCO submission
- Project defined ancient woodland as per DCO submission
- Updated ancient woodland (Natural England) as per October 2025
- Veteran tree group
- Important hedgerows

Veteran tree

- Removed
- Affected managed
- Potentially affected
- Unaffected

Tree

- Removed
- Affected managed
- Potentially affected
- Unaffected

Tree groups

- Removed
- Affected managed
- Potentially affected
- Unaffected

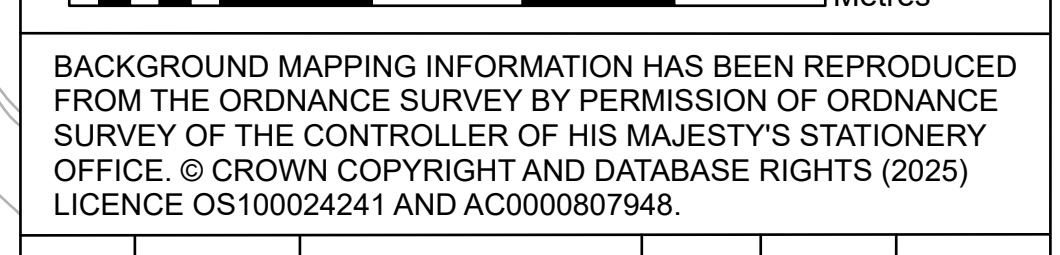
Hedgerows

- Removed
- Affected managed
- Potentially affected
- Unaffected

Notes

- These plans are indicative and the Project will sit within the Order Limits. Due to the need for future flexibility, National Grid will be applying for Order Limits and Limits of Deviation within its DCO, within which any final alignment would lie.
- For additional detail on the plan suites, please refer to the Guide to Plans (document reference 2.0), located in the Volume 2 of the DCO application.
- This drawing is scaled at paper size A0, therefore any prints taken at smaller sizes will affect accuracy of the measurement units and should not be scaled against.
- Spatial locations and details of Tree Preservation Orders have been provided by relevant Local Planning Authorities and their projected spatial locations may differ slightly to those recorded during the arboricultural survey undertaken by the Project. For the avoidance of doubt, references to any tree subject to a Tree Preservation Order on these plans include any such slight differences.
- The Tree Preservation Order data illustrated on the plans is limited to the arboriculture study area (which applies a 30 m buffer from the outer edge of the Order Limits).
- Reference to any tree, shrub, shrubby, hedgerow, or important hedgerow being removed, affected managed, potentially affected or unaffected is without prejudice to the exercise of any power in relation to such tree, shrub, shrubby, hedgerow, or important hedgerow on the terms of the DCO.
- The numbered references to trees comprised in any Individual Tree Preservation Order shown on these plans include any tree to which the relevant line points as well as any tree overlapping any such tree, whether or not a line points to it or not.
- For the avoidance of doubt, where the section and/or local authority boundary and/or Order Limits shown on these plans overlap any tree, hedgerow or ancient woodland shown on these plans such that they are partially obscured these plans are to be interpreted as if the tree, hedgerow or ancient woodland in question is not so obscured.

Coordinate System: British National Grid
 Sheet X Centroid Coordinate: 593599 Sheet Y Centroid Coordinate: 228348



BACKGROUND MAPPING INFORMATION HAS BEEN REPRODUCED FROM THE ORDNANCE SURVEY BY PERMISSION OF ORDNANCE SURVEY OF THE CONTROLLER OF HIS MAJESTY'S STATIONERY OFFICE. © CROWN COPYRIGHT AND DATABASE RIGHTS (2025) LICENCE OS100024241 AND AC0000807948.

Issue	Date	Remarks	Drawn	Checked	Approved
B	MAY-2026	For deadline four	TMH	JPC	KR
A	AUG-2025	For DCO submission	EOS	JPC	KR

Title

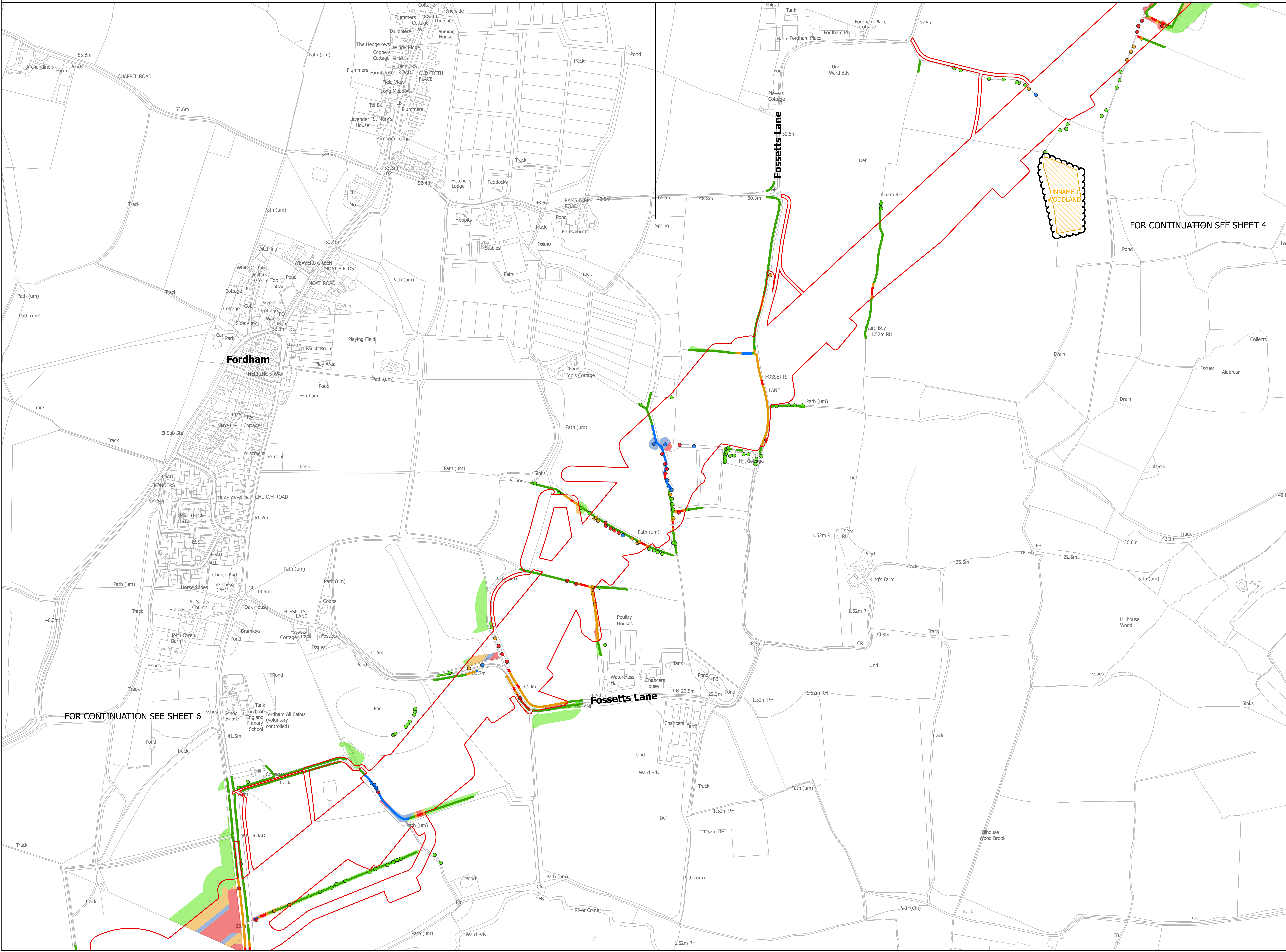
THE NATIONAL GRID (NORWICH TO TILBURY) ORDER
 TREES AND HEDGEROWS TO BE REMOVED AND OR MANAGED PLANS
 REGULATION 5(2)(o)
 SECTION D (SHEET 5 OF 9,
 COLCHESTER CITY COUNCIL)

nationalgrid

PINS Application Number: EN020027

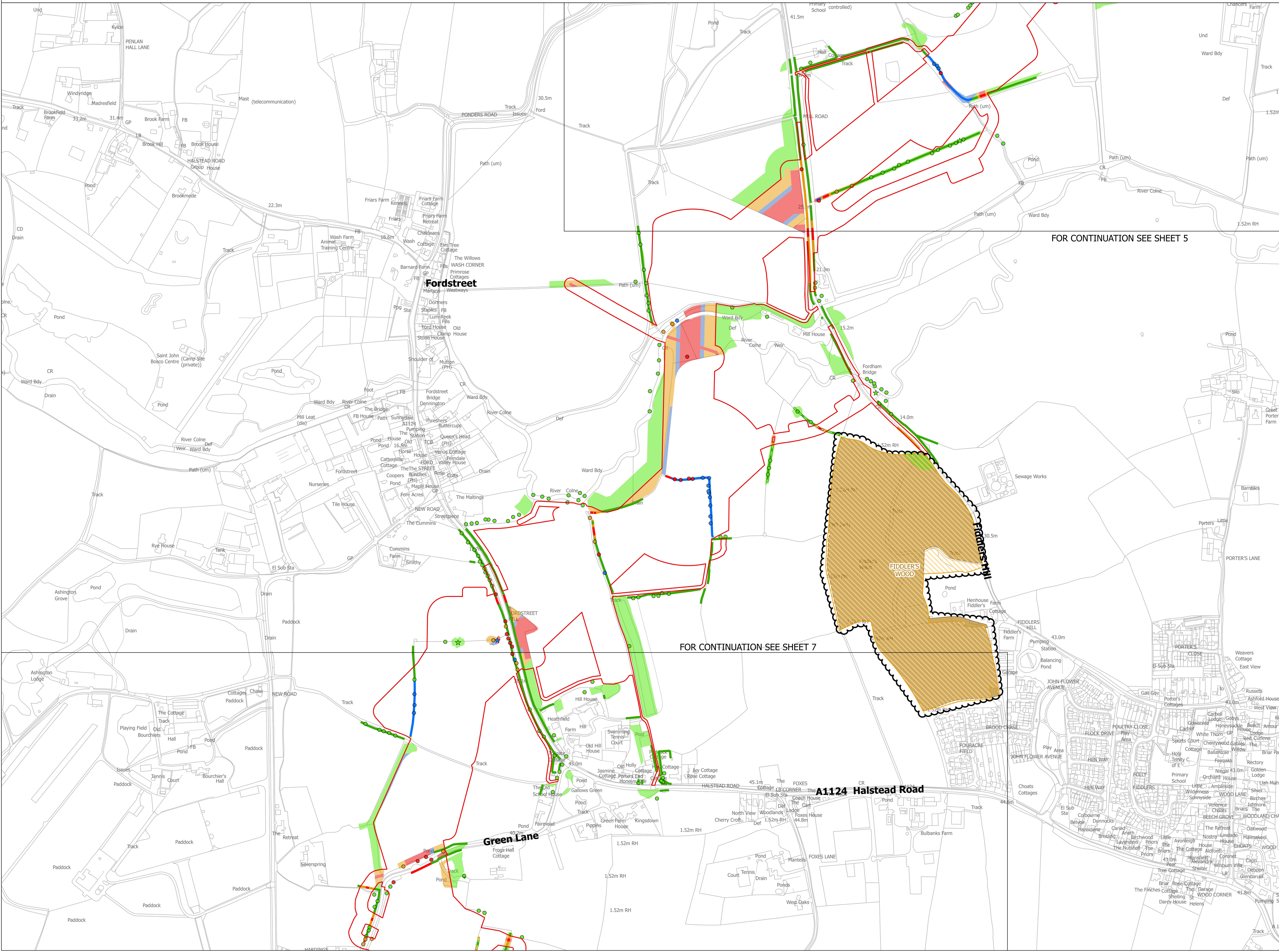
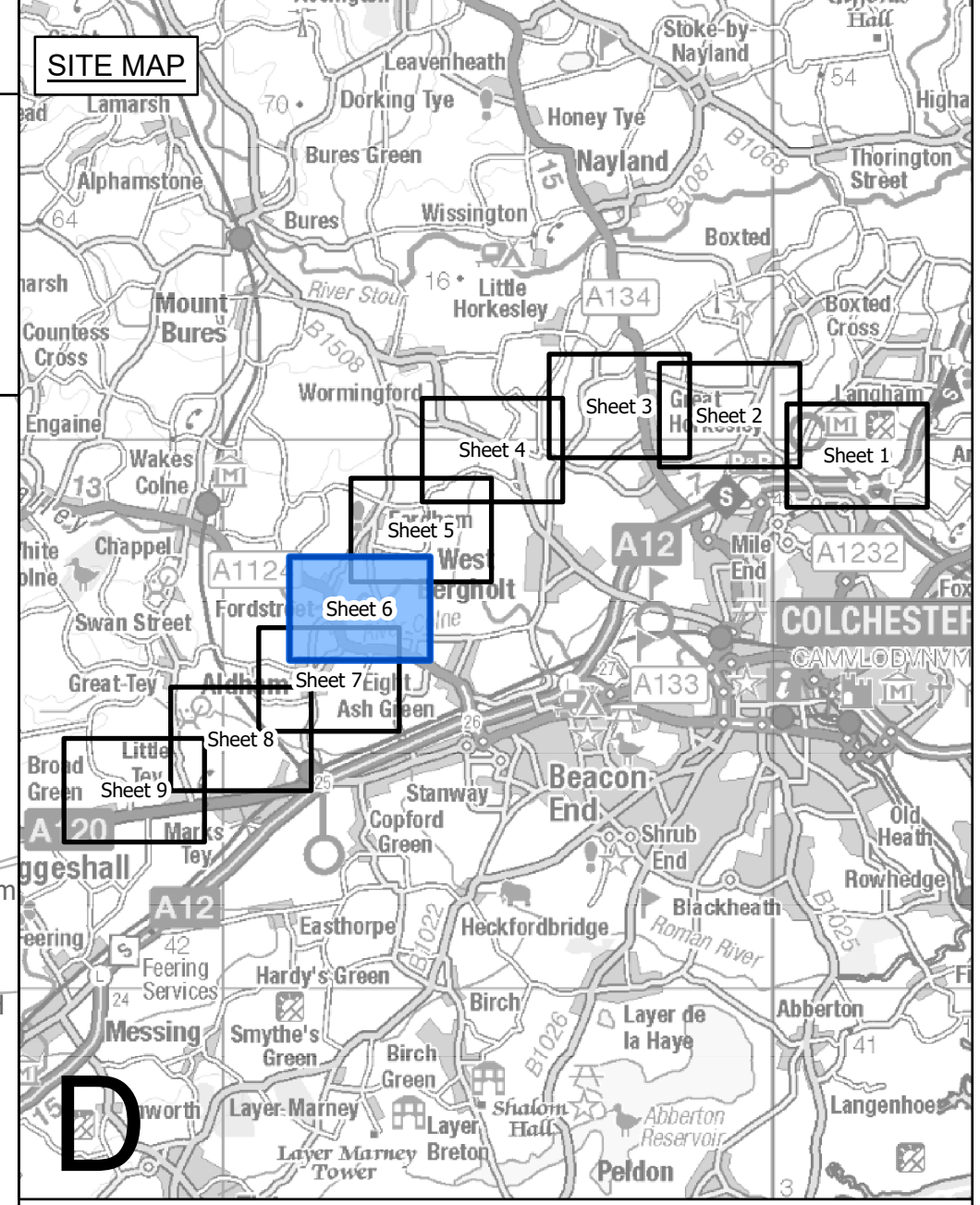
National Grid Drawing Reference: AENC-LSTC-ENG-DWG-0002

Scale	Sheet Size	Sheet	Issue
1:2,500	A0	SHEET 5 OF 9	B





THE NATIONAL GRID (NORWICH TO TILBURY) ORDER
 TREES AND HEDGEROWS TO BE REMOVED AND OR MANAGED PLANS
 REGULATION 5(2)(o)
 SECTION D (SHEET 6 OF 9,
 COLCHESTER CITY COUNCIL)



FOR CONTINUATION SEE SHEET 5

FOR CONTINUATION SEE SHEET 7

Legend

- Local authority boundary
- Section boundary & local authority boundary
- Section boundary
- Sheet index cutlines
- Order Limits
- Individual Tree Preservation Order
- Ancient woodland inventory (Natural England) as per DCO submission
- Project defined ancient woodland as per DCO submission
- Updated ancient woodland (Natural England) as per October 2025
- Veteran tree group
- Important hedgerows

Veteran tree

- Removed
- Affected managed
- Potentially affected
- Unaffected

Tree

- Removed
- Affected managed
- Potentially affected
- Unaffected

Tree groups

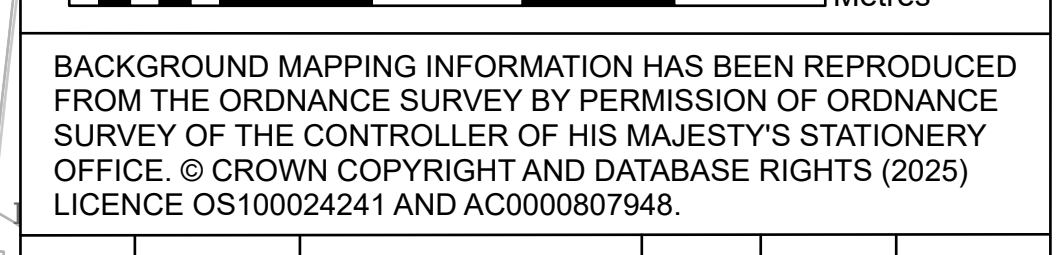
- Removed
- Affected managed
- Potentially affected
- Unaffected

Hedgerows

- Removed
- Affected managed
- Potentially affected
- Unaffected

- Notes**
- These plans are indicative and the Project will sit within the Order Limits. Due to the need for future flexibility, National Grid will be applying for Order Limits and Limits of Deviation within its DCO, within which any final alignment would lie.
 - For additional detail on the plan suites, please refer to the Guide to Plans (document reference 2.0), located in the Volume 2 of the DCO application.
 - This drawing is scaled at paper size A0, therefore any prints taken at smaller sizes will affect accuracy of the measurement units and should not be scaled against.
 - Spatial locations and details of Tree Preservation Orders have been provided by relevant local Planning Authorities and their projected spatial locations may differ slightly to those recorded during the arboricultural survey undertaken by the Project. For the avoidance of doubt, references to any tree subject to a Tree Preservation Order on these plans include any such slight differences.
 - The Tree Preservation Order data illustrated on the plans is limited to the arboriculture study area (which applies a 30 m buffer from the outer edge of the Order Limits).
 - Reference to any tree, shrub, shrubby, hedgerow, or important hedgerow being removed, affected managed, potentially affected or unaffected is without prejudice to the exercise of any power in relation to such tree, shrub, shrubby, hedgerow, or important hedgerow on the terms of the DCO.
 - The numbered references to trees comprised in any Individual Tree Preservation Order shown on these plans include any tree to which the relevant line points as well as any tree overlapping any such tree, whether or not a line points to it or not.
 - For the avoidance of doubt, where the section and/or local authority boundary and/or Order Limits shown on these plans overlap any tree, hedgerow or ancient woodland shown on these plans such that they are partially obscured these plans are to be interpreted as if the tree, hedgerow or ancient woodland in question is not so obscured.

Coordinate System: British National Grid
 Sheet X Centroid Coordinate: 592461 Sheet Y Centroid Coordinate: 226918



BACKGROUND MAPPING INFORMATION HAS BEEN REPRODUCED FROM THE ORDNANCE SURVEY BY PERMISSION OF ORDNANCE SURVEY OF THE CONTROLLER OF HIS MAJESTY'S STATIONERY OFFICE. © CROWN COPYRIGHT AND DATABASE RIGHTS (2025) LICENCE OS100024241 AND AC000087948.

Issue	Date	Remarks	Drawn	Checked	Approved
B	MAY-2026	For deadline four	TMH	JPC	KR
A	AUG-2025	For DCO submission	EOS	JPC	KR

Title
 THE NATIONAL GRID (NORWICH TO TILBURY) ORDER
 TREES AND HEDGEROWS TO BE REMOVED
 AND OR MANAGED PLANS
 REGULATION 5(2)(o)
 SECTION D (SHEET 6 OF 9,
 COLCHESTER CITY COUNCIL)



PINS Application Number EN020027

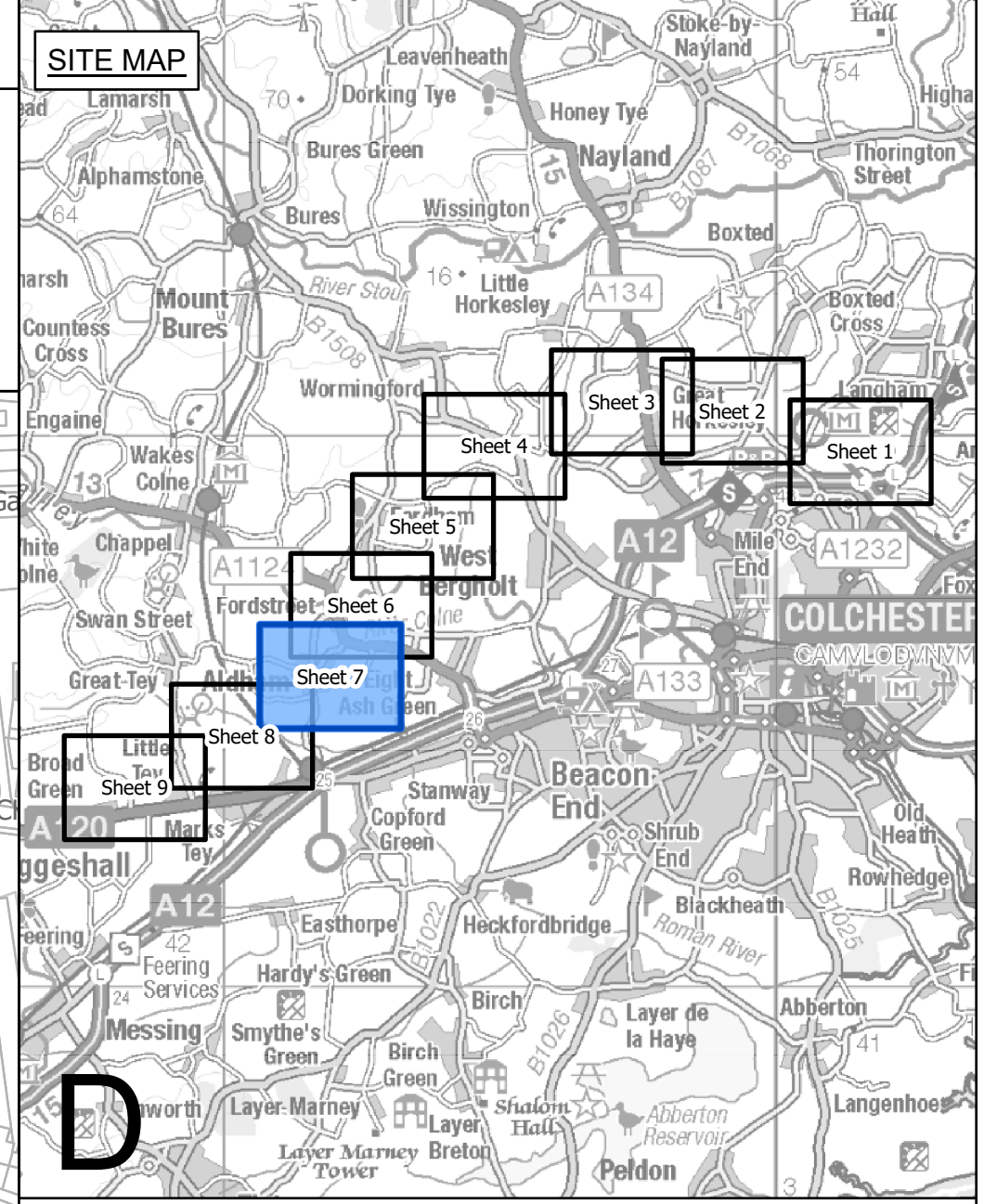
National Grid Drawing Reference
 AENC-LSTC-ENG-DWG-0002

Scale	Sheet Size	Sheet	Issue
1:2,500	A0	SHEET 6 OF 9	B



THE NATIONAL GRID (NORWICH TO TILBURY) ORDER
 TREES AND HEDGEROWS TO BE REMOVED AND OR MANAGED PLANS
 REGULATION 5(2)(o)
 SECTION D (SHEET 7 OF 9,
 COLCHESTER CITY COUNCIL)

Application Document 2.16



Legend

- Local authority boundary
- Section boundary & local authority boundary
- Section boundary
- Sheet index outlines
- Order Limits
- Individual Tree Preservation Order
- Ancient woodland inventory (Natural England) as per DCO submission
- Project defined ancient woodland as per DCO submission
- Updated ancient woodland (Natural England) as per October 2025
- Veteran tree group
- Important hedgerows

Veteran tree

- Removed
- Affected managed
- Potentially affected
- Unaffected

Tree

- Removed
- Affected managed
- Potentially affected
- Unaffected

Tree groups

- Removed
- Affected managed
- Potentially affected
- Unaffected

Hedgerows

- Removed
- Affected managed
- Potentially affected
- Unaffected

- Notes**
- These plans are indicative and the Project will sit within the Order Limits. Due to the need for future flexibility, National Grid will be applying for Order Limits and Limits of Deviation within its DCO, within which any final alignment would lie.
 - For additional detail on the plan suites, please refer to the Guide to Plans (document reference 2.0), located in the Volume 2 of the DCO application.
 - This drawing is scaled at paper size A0, therefore any prints taken at smaller sizes will affect accuracy of the measurement units and should not be scaled against.
 - Spatial locations and details of Tree Preservation Orders have been provided by relevant local Planning Authorities and their projected spatial locations may differ slightly to those recorded during the arboricultural survey undertaken by the Project. For the avoidance of doubt, references to any tree subject to a Tree Preservation Order on these plans include any such slight differences.
 - The Tree Preservation Order data illustrated on the plans is limited to the arboriculture study area (which applies a 30 m buffer from the outer edge of the Order Limits).
 - Reference to any tree, shrub, shrubbery, hedgerow, or important hedgerow being removed, affected managed, potentially affected or unaffected is without prejudice to the exercise of any power in relation to such tree, shrub, shrubbery, hedgerow, or important hedgerow on the terms of the DCO.
 - The numbered references to trees comprised in any Individual Tree Preservation Order shown on these plans include any tree to which the relevant line points as well as any tree overlapping any such tree, whether or not a line points to it or not.
 - For the avoidance of doubt, where the section and/or local authority boundary and/or Order Limits shown on these plans overlap any tree, hedgerow or ancient woodland shown on these plans such that they are partially obscured these plans are to be interpreted as if the tree, hedgerow or ancient woodland in question is not so obscured.

Coordinate System: British National Grid
 Sheet X Centroid Coordinate: 591921 Sheet Y Centroid Coordinate: 229626

0 50 100 150 200 250 Metres

BACKGROUND MAPPING INFORMATION HAS BEEN REPRODUCED FROM THE ORDNANCE SURVEY BY PERMISSION OF ORDNANCE SURVEY OF THE CONTROLLER OF HIS MAJESTY'S STATIONERY OFFICE. © CROWN COPYRIGHT AND DATABASE RIGHTS (2025) LICENCE OS100024241 AND AC0000807948.

Issue	Date	Remarks	Drawn	Checked	Approved
B	MAY-2026	For deadline four	TMH	JPC	KR
A	AUG-2025	For DCO submission	EOS	JPC	KR

Title

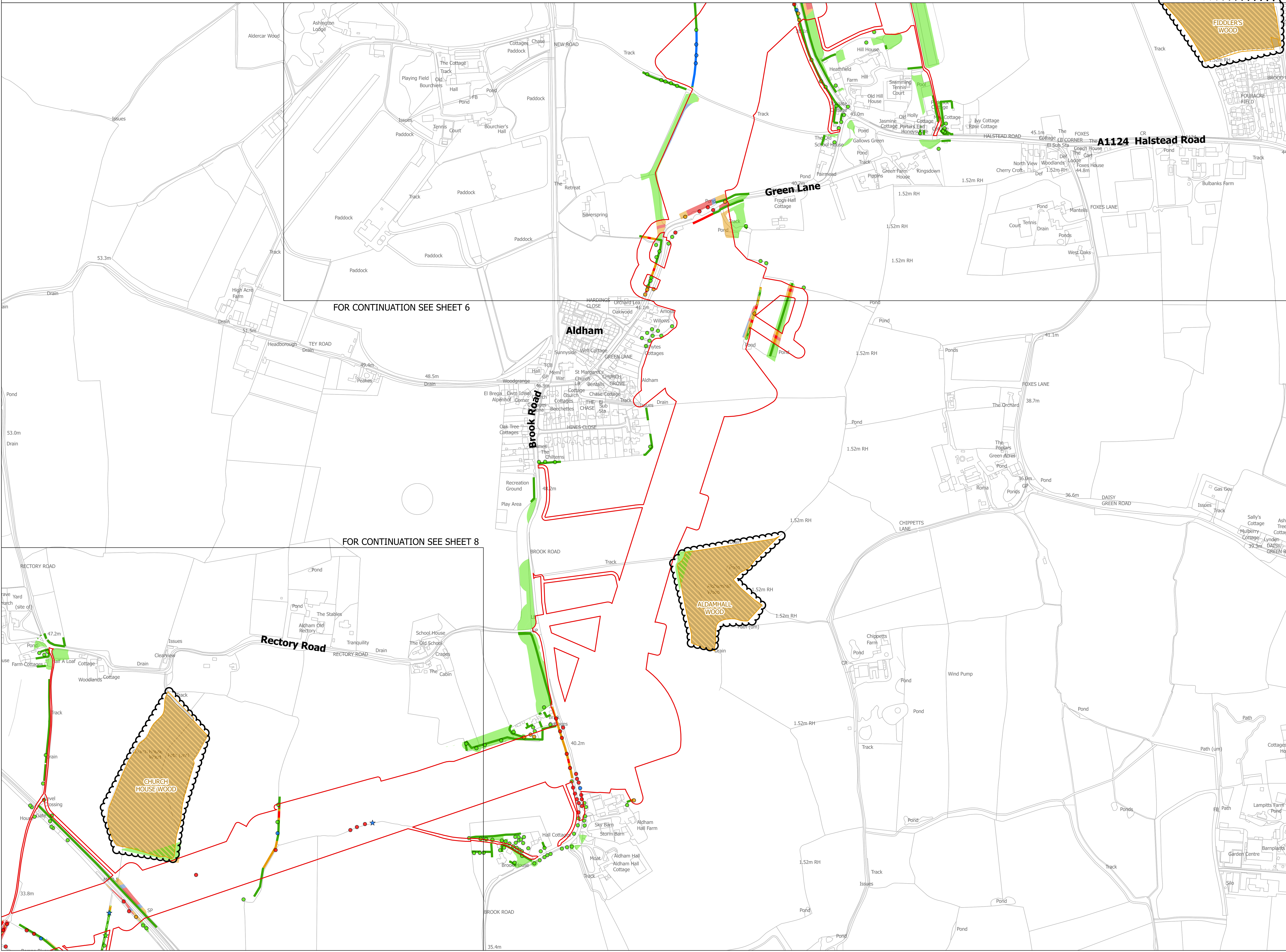
THE NATIONAL GRID (NORWICH TO TILBURY) ORDER
 TREES AND HEDGEROWS TO BE REMOVED AND OR MANAGED PLANS
 REGULATION 5(2)(o)
 SECTION D (SHEET 7 OF 9,
 COLCHESTER CITY COUNCIL)

nationalgrid

PINS Application Number: EN020027

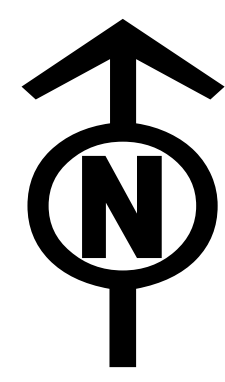
National Grid Drawing Reference: AENC-LSTC-ENG-DWG-0002

Scale	Sheet Size	Sheet	Issue
1:2,500	A0	SHEET 7 OF 9	B



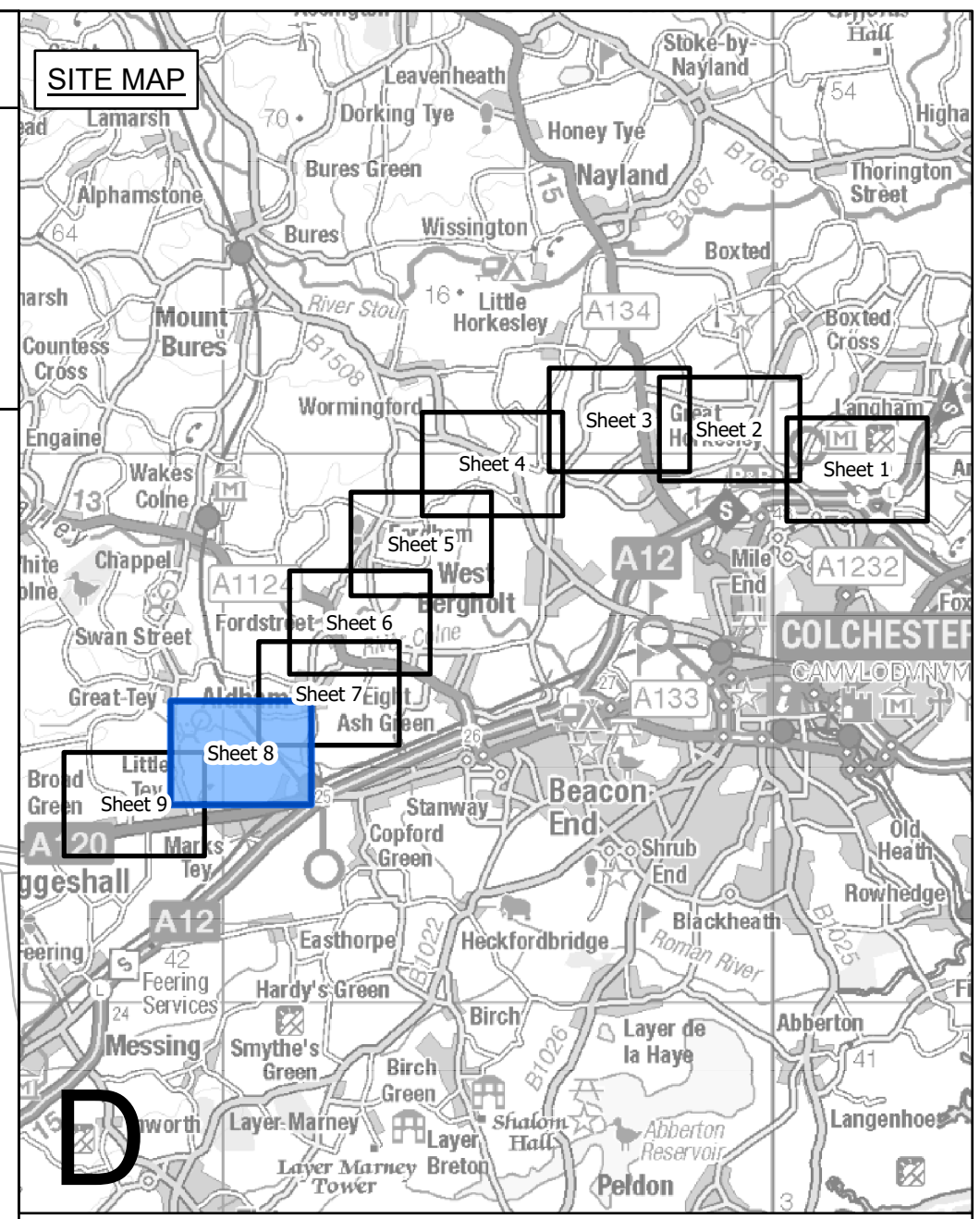
FOR CONTINUATION SEE SHEET 6

FOR CONTINUATION SEE SHEET 8



THE NATIONAL GRID (NORWICH TO TILBURY) ORDER
 TREES AND HEDGEROWS TO BE REMOVED AND OR MANAGED PLANS
 REGULATION 5(2)(o)
 SECTION D (SHEET 8 OF 9,
 COLCHESTER CITY COUNCIL)

Application Document 2.16

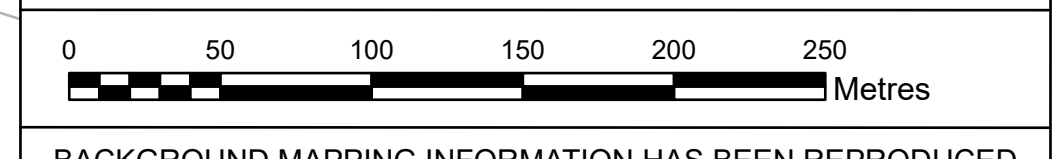


Legend

- Local authority boundary
- Section boundary & local authority boundary
- Section boundary
- Sheet index outlines
- Order Limits
- Individual Tree Preservation Order
- Ancient woodland inventory (Natural England) as per DCO submission
- Project defined ancient woodland as per DCO submission
- Updated ancient woodland (Natural England) as per October 2025
- Veteran tree group
- Important hedgerows
- Veteran tree**
 - Removed
 - Affected managed
 - Potentially affected
 - Unaffected
- Tree**
 - Removed
 - Affected managed
 - Potentially affected
 - Unaffected
- Tree groups**
 - Removed
 - Affected managed
 - Potentially affected
 - Unaffected
- Hedgerows**
 - Removed
 - Affected managed
 - Potentially affected
 - Unaffected

Notes

- These plans are indicative and the Project will sit within the Order Limits. Due to the need for future flexibility, National Grid will be applying for Order Limits and Limits of Deviation within its DCO, within which any final alignment would lie.
- For additional detail on the plan suites, please refer to the Guide to Plans (document reference 2.0), located in the Volume 2 of the DCO application.
- This drawing is scaled at paper size A0, therefore any prints taken at smaller sizes will affect accuracy of the measurement units and should not be scaled against.
- Spatial locations and details of Tree Preservation Orders have been provided by relevant Local Planning Authorities and their projected spatial locations may differ slightly to those recorded during the arboricultural survey undertaken by the Project. For the avoidance of doubt, references to any tree subject to a Tree Preservation Order on these plans include any such slight differences.
- The Tree Preservation Order data illustrated on the plans is limited to the arboriculture study area (which applies a 30 m buffer from the outer edge of the Order Limits).
- Reference to any tree, shrub, shrubby, hedgerow, or important hedgerow being removed, affected managed, potentially affected or unaffected is without prejudice to the exercise of any power in relation to such tree, shrub, shrubby, hedgerow, or important hedgerow on the terms of the DCO.
- The numbered references to trees comprised in any Individual Tree Preservation Order shown on these plans include any tree to which the relevant line points as well as any tree overlapping any such tree, whether or not a line points to it or not.
- For the avoidance of doubt, where the section and/or local authority boundary and/or Order Limits shown on these plans overlap any tree, hedgerow or ancient woodland shown on these plans such that they are partially obscured these plans are to be interpreted as if the tree, hedgerow or ancient woodland in question is not so obscured.



BACKGROUND MAPPING INFORMATION HAS BEEN REPRODUCED FROM THE ORDNANCE SURVEY BY PERMISSION OF ORDNANCE SURVEY OF THE CONTROLLER OF HIS MAJESTY'S STATIONERY OFFICE. © CROWN COPYRIGHT AND DATABASE RIGHTS (2025) LICENCE OS100024241 AND AC0000807948.

Issue	Date	Remarks	Drawn	Checked	Approved
B	MAY-2026	For deadline four	TMH	JPC	KR
A	AUG-2025	For DCO submission	EOS	JPC	KR

Title

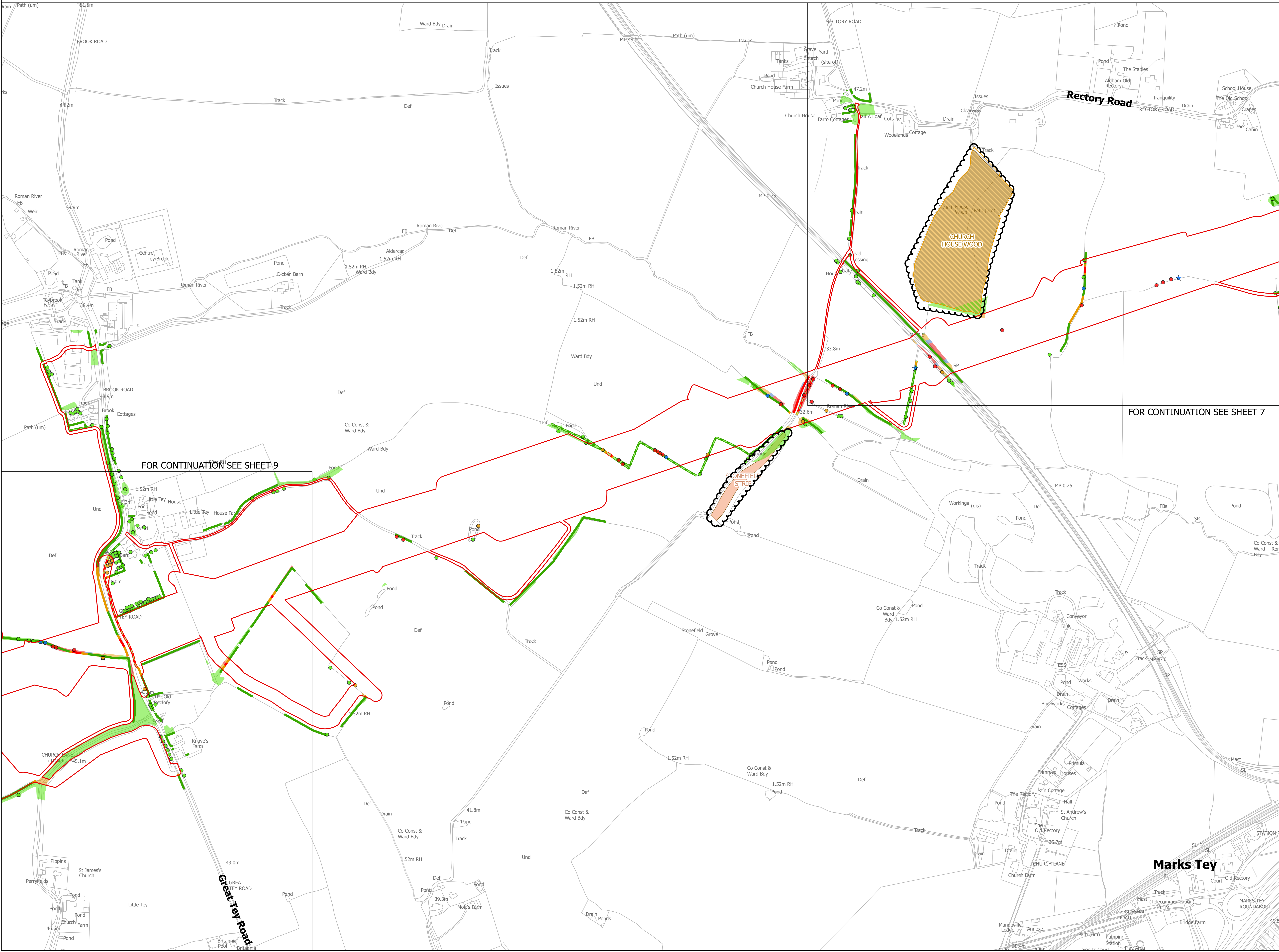
THE NATIONAL GRID (NORWICH TO TILBURY) ORDER
 TREES AND HEDGEROWS TO BE REMOVED AND OR MANAGED PLANS
 REGULATION 5(2)(o)
 SECTION D (SHEET 8 OF 9,
 COLCHESTER CITY COUNCIL)

nationalgrid

PINS Application Number: EN020027

National Grid Drawing Reference: AENC-LSTC-ENG-DWG-0002

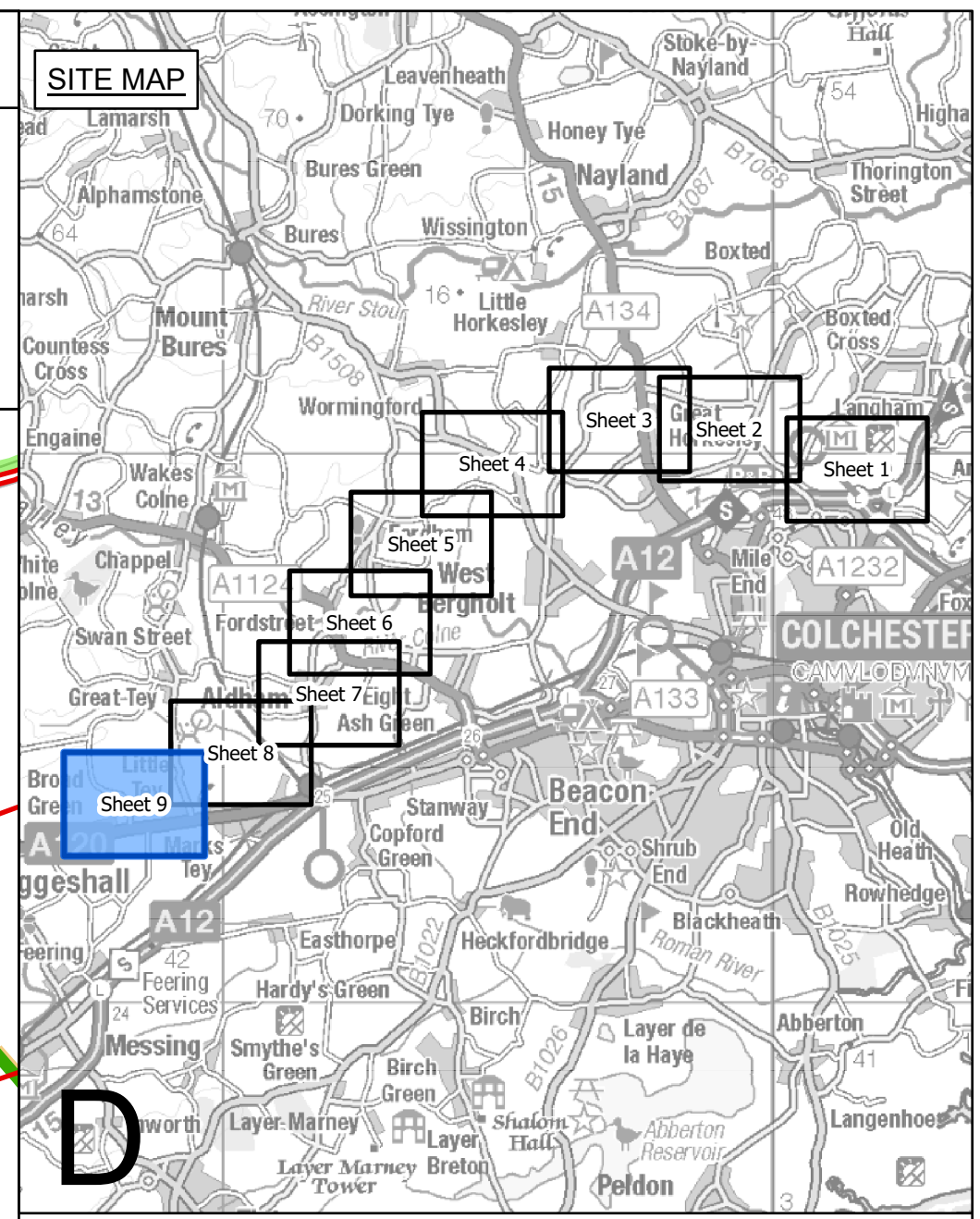
Scale	Sheet Size	Sheet	Issue
1:2,500	A0	SHEET 8 OF 9	B





THE NATIONAL GRID (NORWICH TO TILBURY) ORDER
 TREES AND HEDGEROWS TO BE REMOVED AND OR MANAGED PLANS
 REGULATION 5(2)(o)
 SECTION D (SHEET 9 OF 9,
 COLCHESTER CITY COUNCIL AND BRAINTREE DISTRICT COUNCIL)

Application Document 2.16



D

Legend

- Local authority boundary
- Section boundary & local authority boundary
- Section boundary
- Sheet index cutlines
- Order Limits
- Individual Tree Preservation Order
- Ancient woodland inventory (Natural England) as per DCO submission
- Projected ancient woodland as per DCO submission
- Updated ancient woodland (Natural England) as per October 2025
- Veteran tree group
- Important hedgerows
- Veteran tree**
 - Removed
 - Affected managed
 - Potentially affected
 - Unaffected
- Tree**
 - Removed
 - Affected managed
 - Potentially affected
 - Unaffected
- Tree groups**
 - Removed
 - Affected managed
 - Potentially affected
 - Unaffected
- Hedgerows**
 - Removed
 - Affected managed
 - Potentially affected
 - Unaffected

- Notes**
- These plans are indicative and the Project will sit within the Order Limits. Due to the need for future flexibility, National Grid will be applying for Order Limits and Limits of Deviation within its DCO, within which any final alignment would lie.
 - For additional detail on the plan suites, please refer to the Guide to Plans (document reference 2.0), located in the Volume 2 of the DCO application.
 - This drawing is scaled at paper size A0, therefore any prints taken at smaller sizes will affect accuracy of the measurement units and should not be scaled against.
 - Spatial locations and details of Tree Preservation Orders have been provided by relevant local Planning Authorities and their projected spatial locations may differ slightly to those recorded during the arboricultural survey undertaken by the Project. For the avoidance of doubt, references to any tree subject to a Tree Preservation Order on these plans include any such slight differences.
 - The Tree Preservation Order data illustrated on the plans is limited to the arboriculture study area (which applies a 30 m buffer from the outer edge of the Order Limits).
 - Reference to any tree, shrub, shrubby, hedgerow, or important hedgerow being removed, affected managed, potentially affected or unaffected is without prejudice to the exercise of any power in relation to such tree, shrub, shrubby, hedgerow, or important hedgerow on the terms of the DCO.
 - The numbered references to trees comprised in any Individual Tree Preservation Order shown on these plans include any tree to which the relevant line points as well as any tree overlapping any such tree, whether or not a line points to it or not.
 - For the avoidance of doubt, where the section and/or local authority boundary and/or Order Limits shown on these plans overlap any tree, hedgerow or ancient woodland shown on these plans such that they are partially obscured these plans are to be interpreted as if the tree, hedgerow or ancient woodland in question is not so obscured.

Coordinate System: British National Grid
 Sheet X Centroid Coordinate: 588376 Sheet Y Centroid Coordinate: 223611

BACKGROUND MAPPING INFORMATION HAS BEEN REPRODUCED FROM THE ORDNANCE SURVEY BY PERMISSION OF ORDNANCE SURVEY OF THE CONTROLLER OF HIS MAJESTY'S STATIONERY OFFICE. © CROWN COPYRIGHT AND DATABASE RIGHTS (2025) LICENCE OS100024241 AND AC0000807948.

Issue	Date	Remarks	Drawn	Checked	Approved
B	MAY-2026	For deadline four	TMH	JPC	KR
A	AUG-2025	For DCO submission	EOS	JPC	KR

Title
 THE NATIONAL GRID (NORWICH TO TILBURY) ORDER
 TREES AND HEDGEROWS TO BE REMOVED
 AND OR MANAGED PLANS
 REGULATION 5(2)(o)
 SECTION D (SHEET 9 OF 9,
 COLCHESTER CITY COUNCIL AND
 BRAINTREE DISTRICT COUNCIL)

nationalgrid

PINS Application Number: EN020027

National Grid Drawing Reference: AENC-LSTC-ENG-DWG-0002

Scale	Sheet Size	Sheet	Issue
1:2,500	A0	SHEET 9 OF 9	B

